

DATASHEET

HSP25.3 Rabbit Polyclonal Antibody

CAT. NO. APA12537

KEY FEATURES

Target	HSP25.3	Source / Host	Rabbit
Reactivity	Arabidopsis thaliana	Clonality	Polyclonal
Applications	WB	Conjugation	Unconjugated
Form / Buffer	Liquid in 0.42% Potassium phosphate, 0.87% Sodium chloride, pH 7.3, 30% glycerol, and 0.01% sodium azide.		Storage at -20°C

BACKGROUND

Chaperone protein required for seedling and chloroplast development under heat stress, probably by maintaining plastid-encoded RNA polymerase (PEP)-dependent transcription.

APPLICATION

To ensure optimal assay performance, AREX recommends conducting reagent titration tailored to each testing system for optimal detection results.

WB	1:500 - 1:2000
----	----------------

*Results are sample-specific. Please refer to your local assay conditions and test parameters for reference.

PRODUCT OVERVIEW

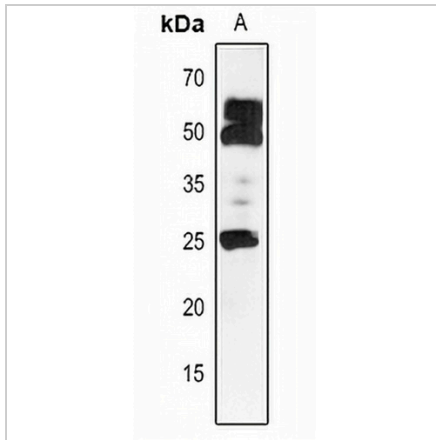
Description	Rabbit polyclonal antibody to HSP25.3
Specificity	Recognizes endogenous levels of HSP25.3 protein.
Antibody Type	Primary antibody
Immunogen	KLH-conjugated synthetic peptide encompassing a sequence within the center region of arabidopsis thaliana HSP25.3. The exact sequence is proprietary.
Purification	The antibody was purified by immunogen affinity chromatography.
Molecular Weight	Predicted: 25 kD; Observed: 25 kD
Form/Buffer	Liquid in 0.42% Potassium phosphate, 0.87% Sodium chloride, pH 7.3, 30% glycerol, and 0.01% sodium azide.
Alternative Names	Heat shock protein 21; chloroplastic; 25.3 kDa heat shock protein chloroplastic; AtHsp25.3; HSP25.3
Gene Symbol	HSP25.3
Entrez Gene	828881(Human)
SwissProt	P31170(Human)

*AREX continuously optimizes our products. Webpage content may not reflect the latest updates. For inquiries, please contact info@arexbio.com or your local distributor.

*Clone Number, Reactivity, Source/Host and Clonality can be found in the product name and Key Features section above.

DATASHEET**HSP25.3 Rabbit Polyclonal Antibody**

CAT. NO. APA12537

DATA

Western blot analysis of HSP25.3 expression in Arabidopsis thaliana (A) whole cell lysates.
(Predicted band size: 25 kD; Observed band size: 25 kD)

STORAGE

Store at 4°C short term. For long term storage, store at -20°C, avoiding freeze/thaw cycles.

NOTE

For Research Use Only. Not for diagnostic, therapeutics, prophylactic or in vivo use.