

DATASHEET

MPK6 Rabbit Polyclonal Antibody

CAT. NO. APA12538

KEY FEATURES

Target	MPK6	Source / Host	Rabbit
Reactivity	Arabidopsis thaliana	Clonality	Polyclonal
Applications	WB	Conjugation	Unconjugated
Form / Buffer	Liquid in 0.42% Potassium phosphate, 0.87% Sodium chloride, pH 7.3, 30% glycerol, and 0.01% sodium azide.		Storage at -20°C

BACKGROUND

Mitogen-activated protein kinase (MAPK) which regulates abscisic acid (ABA) responses in a MAPKKK20-MKK5-MPK6 cascade involved in root growth (e.g. root cell division and elongation) and stomatal response which regulates abscisic acid (ABA) responses in a MAPKKK20-MKK5-MPK6 cascade involved in root growth (e.g. root cell division and elongation) and stomatal response. Involved in oxidative stress-mediated signaling cascade (such as ozone). Involved in the innate immune MAP kinase signaling cascade (MEKK1, MKK4/MKK5 and MPK3/MPK6) downstream of bacterial flagellin receptor FLS2. May be involved in hypersensitive response (HR)-mediated signaling cascade by modulating LIP5 phosphorylation and subsequent multivesicular bodies (MVBs) trafficking.

APPLICATION

To ensure optimal assay performance, AREX recommends conducting reagent titration tailored to each testing system for optimal detection results.

WB	1:500 - 1:2000
----	----------------

*Results are sample-specific. Please refer to your local assay conditions and test parameters for reference.

PRODUCT OVERVIEW

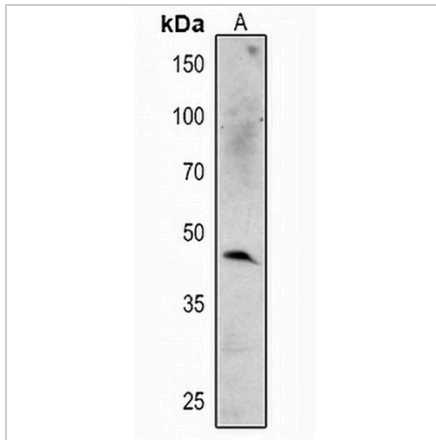
Description	Rabbit polyclonal antibody to MPK6
Specificity	Recognizes endogenous levels of MPK6 protein.
Antibody Type	Primary antibody
Immunogen	KLH-conjugated synthetic peptide encompassing a sequence within the N-term region of arabidopsis thaliana MPK6. The exact sequence is proprietary.
Purification	The antibody was purified by immunogen affinity chromatography.
Molecular Weight	Predicted: 45 kD; Observed: 45 kD
Form/Buffer	Liquid in 0.42% Potassium phosphate, 0.87% Sodium chloride, pH 7.3, 30% glycerol, and 0.01% sodium azide.
Alternative Names	Mitogen-activated protein kinase 6; PROSITE-ProRule annotation; AtMPK6; MAP kinase 6
Gene Symbol	MPK6
Entrez Gene	818982(Human)
SwissProt	Q39026(Human)

*AREX continuously optimizes our products. Webpage content may not reflect the latest updates. For inquiries, please contact info@arex.bio or your local distributor.

*Clone Number, Reactivity, Source/Host and Clonality can be found in the product name and Key Features section above.

DATASHEET**MPK6 Rabbit Polyclonal Antibody**

CAT. NO. APA12538

DATA

Western blot analysis of MPK6 expression in Arabidopsis thaliana (A) whole cell lysates.
(Predicted band size: 45 kD; Observed band size: 45 kD)

STORAGE

Store at 4°C short term. For long term storage, store at -20°C, avoiding freeze/thaw cycles.

NOTE

For Research Use Only. Not for diagnostic, therapeutics, prophylactic or in vivo use.