

DATASHEET

PAP1 Rabbit Polyclonal Antibody

CAT. NO. APA12539

KEY FEATURES

Target	PAP1	Source / Host	Rabbit
Reactivity	Arabidopsis thaliana	Clonality	Polyclonal
Applications	WB	Conjugation	Unconjugated
Form / Buffer	Liquid in 0.42% Potassium phosphate, 0.87% Sodium chloride, pH 7.3, 30% glycerol, and 0.01% sodium azide.		Storage at -20°C

BACKGROUND

Probably involved in light/cold stress-related jasmonate (JA) biosynthesis. Contributes to the protection of photosystem II (PSII) against light stress.

APPLICATION

To ensure optimal assay performance, AREX recommends conducting reagent titration tailored to each testing system for optimal detection results.

WB	1:500 - 1:2000
----	----------------

*Results are sample-specific. Please refer to your local assay conditions and test parameters for reference.

PRODUCT OVERVIEW

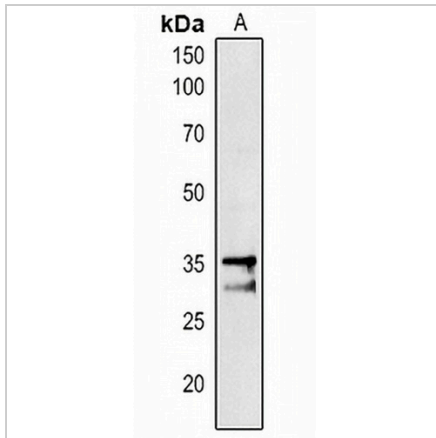
Description	Rabbit polyclonal antibody to PAP1
Specificity	Recognizes endogenous levels of PAP1 protein.
Antibody Type	Primary antibody
Immunogen	KLH-conjugated synthetic peptide encompassing a sequence within the N-term region of arabidopsis thaliana PAP1. The exact sequence is proprietary.
Purification	The antibody was purified by immunogen affinity chromatography.
Molecular Weight	Predicted: 34 kD; Observed: 35 kD
Form/Buffer	Liquid in 0.42% Potassium phosphate, 0.87% Sodium chloride, pH 7.3, 30% glycerol, and 0.01% sodium azide.
Alternative Names	FBN1a; FIB1a; PGL35; Probable plastid-lipid-associated protein 1 chloroplastic; AtPap1; Fibrillin-1a; Plastoglobulin 35; AtPGL35
Gene Symbol	PAP1
Entrez Gene	825714(Human)
SwissProt	O81439(Human)

*AREX continuously optimizes our products. Webpage content may not reflect the latest updates. For inquiries, please contact info@arexbio.com or your local distributor.

*Clone Number, Reactivity, Source/Host and Clonality can be found in the product name and Key Features section above.

DATASHEET**PAP1 Rabbit Polyclonal Antibody**

CAT. NO. APA12539

DATA

Western blot analysis of PAP1 expression in Arabidopsis thaliana (A) whole cell lysates.
(Predicted band size: 34 kD; Observed band size: 35 kD)

STORAGE

Store at 4°C short term. For long term storage, store at -20°C, avoiding freeze/thaw cycles.

NOTE

For Research Use Only. Not for diagnostic, therapeutics, prophylactic or in vivo use.