

**DATASHEET**

**petC Rabbit Polyclonal Antibody**

CAT. NO. APA12540

**KEY FEATURES**

Target	petC	Source / Host	Rabbit
Reactivity	Arabidopsis thaliana	Clonality	Polyclonal
Applications	WB	Conjugation	Unconjugated
Form / Buffer	Liquid in 0.42% Potassium phosphate, 0.87% Sodium chloride, pH 7.3, 30% glycerol, and 0.01% sodium azide.		Storage at -20°C

**BACKGROUND**

Essential protein for photoautotrophism. Confers resistance to photo-oxidative damages by contributing to the thermal dissipation of light energy and to lumenal acidification (increase of pH gradient). Component of the cytochrome b6-f complex, which mediates electron transfer between photosystem II (PSII) and photosystem I (PSI), cyclic electron flow around PSI, and state transitions .

**APPLICATION**

To ensure optimal assay performance, AREX recommends conducting reagent titration tailored to each testing system for optimal detection results.

WB	1:500 - 1:2000
----	----------------

\*Results are sample-specific. Please refer to your local assay conditions and test parameters for reference.

**PRODUCT OVERVIEW**

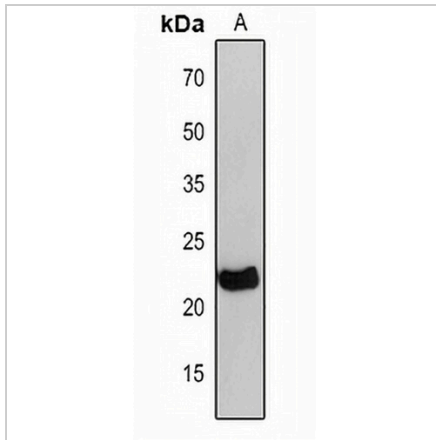
Description	Rabbit polyclonal antibody to petC
Specificity	Recognizes endogenous levels of petC protein.
Antibody Type	Primary antibody
Immunogen	KLH-conjugated synthetic peptide encompassing a sequence within the N-term region of arabidopsis thaliana petC. The exact sequence is proprietary.
Purification	The antibody was purified by immunogen affinity chromatography.
Molecular Weight	Predicted: 24; Observed: 22 kD
Form/Buffer	Liquid in 0.42% Potassium phosphate, 0.87% Sodium chloride, pH 7.3, 30% glycerol, and 0.01% sodium azide.
Alternative Names	PGR1; Cytochrome b6-f complex iron-sulfur subunit chloroplastic; Plastohydroquinone:plastocyanin oxidoreductase iron-sulfur protein; Proton gradient regulation protein 1; Rieske iron-sulfur protein; ISP; RISP
Gene Symbol	petC
Entrez Gene	827996(Human)
SwissProt	Q9ZR03(Human)

\*AREX continuously optimizes our products. Webpage content may not reflect the latest updates. For inquiries, please contact [info@arexbio.com](mailto:info@arexbio.com) or your local distributor.

\*Clone Number, Reactivity, Source/Host and Clonality can be found in the product name and Key Features section above.

**DATASHEET****petC Rabbit Polyclonal Antibody**

CAT. NO. APA12540

**DATA**

Western blot analysis of petC expression in arabidopsis thaliana (A) whole cell lysates.  
(Predicted band size: 24; 22 kD; Observed band size: 22 kD)

**STORAGE**

Store at 4°C short term. For long term storage, store at -20°C, avoiding freeze/thaw cycles.

**NOTE**

For Research Use Only. Not for diagnostic, therapeutics, prophylactic or in vivo use.