

DATASHEET

PEX14 Rabbit Polyclonal Antibody

CAT. NO. APA12541

KEY FEATURES

Target	PEX14	Source / Host	Rabbit
Reactivity	Arabidopsis thaliana	Clonality	Polyclonal
Applications	WB	Conjugation	Unconjugated
Form / Buffer	Liquid in 0.42% Potassium phosphate, 0.87% Sodium chloride, pH 7.3, 30% glycerol, and 0.01% sodium azide.		Storage at -20°C

BACKGROUND

Component of the PEX13-PEX14 docking complex, a translocon channel that specifically mediates the import of peroxisomal cargo proteins bound to PEX5 receptor. The PEX13-PEX14 docking complex forms a large import pore which can be opened to a diameter of about 9 nm. Mechanistically, PEX5 receptor along with cargo proteins associates with the PEX14 subunit of the PEX13-PEX14 docking complex in the cytosol, leading to the insertion of the receptor into the organelle membrane with the concomitant translocation of the cargo into the peroxisome matrix.

APPLICATION

To ensure optimal assay performance, AREX recommends conducting reagent titration tailored to each testing system for optimal detection results.

WB	1:500 - 1:2000
----	----------------

*Results are sample-specific. Please refer to your local assay conditions and test parameters for reference.

PRODUCT OVERVIEW

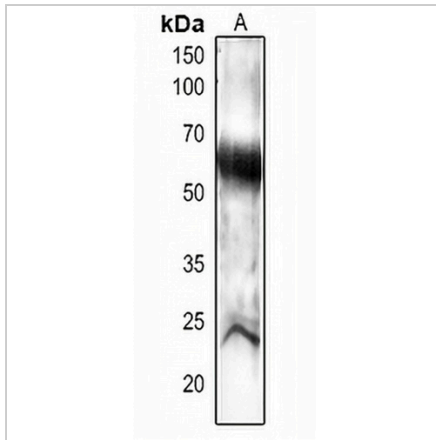
Description	Rabbit polyclonal antibody to PEX14
Specificity	Recognizes endogenous levels of PEX14 protein.
Antibody Type	Primary antibody
Immunogen	KLH-conjugated synthetic peptide encompassing a sequence within the C-term region of arabidopsis thaliana PEX14. The exact sequence is proprietary.
Purification	The antibody was purified by immunogen affinity chromatography.
Molecular Weight	Predicted: 55 kD; Observed: 55 kD
Form/Buffer	Liquid in 0.42% Potassium phosphate, 0.87% Sodium chloride, pH 7.3, 30% glycerol, and 0.01% sodium azide.
Alternative Names	PED2; Peroxisomal membrane protein PEX14; Peroxin-14; AtPEX14; Peroxisome biogenesis protein 14; Pex14p; Protein PEROXISOME DEFECTIVE 2
Gene Symbol	PEX14
Entrez Gene	836402(Human)
SwissProt	Q9FXT6(Human)

*AREX continuously optimizes our products. Webpage content may not reflect the latest updates. For inquiries, please contact info@arexbio.com or your local distributor.

*Clone Number, Reactivity, Source/Host and Clonality can be found in the product name and Key Features section above.

DATASHEET**PEX14 Rabbit Polyclonal Antibody**

CAT. NO. APA12541

DATA

Western blot analysis of PEX14 expression in Arabidopsis thaliana (A) whole cell lysates.
(Predicted band size: 55 kD; Observed band size: 55 kD)

STORAGE

Store at 4°C short term. For long term storage, store at -20°C, avoiding freeze/thaw cycles.

NOTE

For Research Use Only. Not for diagnostic, therapeutics, prophylactic or in vivo use.