

**DATASHEET**

**PSBO1/2 Rabbit Polyclonal Antibody**

CAT. NO. APA12544

**KEY FEATURES**

Target	PSBO1/2	Source / Host	Rabbit
Reactivity	Arabidopsis thaliana	Clonality	Polyclonal
Applications	WB	Conjugation	Unconjugated
Form / Buffer	Liquid in 0.42% Potassium phosphate, 0.87% Sodium chloride, pH 7.3, 30% glycerol, and 0.01% sodium azide.		Storage at -20°C

**BACKGROUND**

Stabilizes the manganese cluster which is the primary site of water splitting.

**APPLICATION**

To ensure optimal assay performance, AREX recommends conducting reagent titration tailored to each testing system for optimal detection results.

WB	1:500 - 1:2000
----	----------------

\*Results are sample-specific. Please refer to your local assay conditions and test parameters for reference.

**PRODUCT OVERVIEW**

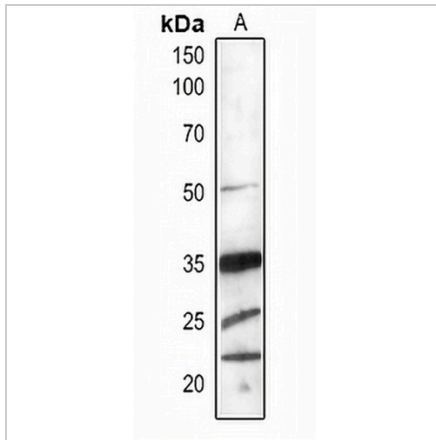
Description	Rabbit polyclonal antibody to PSBO1/2
Specificity	Recognizes endogenous levels of PSBO1/2 protein.
Antibody Type	Primary antibody
Immunogen	KLH-conjugated synthetic peptide encompassing a sequence within the center region of arabidopsis thaliana PSBO1/2. The exact sequence is proprietary.
Purification	The antibody was purified by immunogen affinity chromatography.
Molecular Weight	Predicted: 35 kD; Observed: 35 kD
Form/Buffer	Liquid in 0.42% Potassium phosphate, 0.87% Sodium chloride, pH 7.3, 30% glycerol, and 0.01% sodium azide.
Alternative Names	PSBO; Oxygen-evolving enhancer protein 1-1 chloroplastic; OEE1; 33 kDa subunit of oxygen evolving system of photosystem II; 33 kDa thylakoid membrane protein; Manganese-stabilizing protein 1; MSP-1; OEC 33 kDa subunit; Oxygen-evolving enhancer protein 1-2 chloroplastic; OEE1; 33 kDa subunit of oxygen evolving system of photosystem II; 33 kDa thylakoid membrane protein; Manganese-stabilizing protein 2; MSP-2; OEC 33 kDa subunit
Gene Symbol	PSBO1; PSBO2
Entrez Gene	836789; 824246(Human)
SwissProt	P23321; Q9S841(Human)

\*AREX continuously optimizes our products. Webpage content may not reflect the latest updates. For inquiries, please contact [info@arexbio.com](mailto:info@arexbio.com) or your local distributor.

\*Clone Number, Reactivity, Source/Host and Clonality can be found in the product name and Key Features section above.

**DATASHEET****PSBO1/2 Rabbit Polyclonal Antibody**

CAT. NO. APA12544

**DATA**

Western blot analysis of PSBO1/2 expression in Arabidopsis thaliana (A) whole cell lysates.  
(Predicted band size: 35 kD; Observed band size: 35 kD)

**STORAGE**

Store at 4°C short term. For long term storage, store at -20°C, avoiding freeze/thaw cycles.

**NOTE**

For Research Use Only. Not for diagnostic, therapeutics, prophylactic or in vivo use.