

DATASHEET

SCE1 Rabbit Polyclonal Antibody

CAT. NO. APA12545

KEY FEATURES

Target	SCE1	Source / Host	Rabbit
Reactivity	Arabidopsis thaliana	Clonality	Polyclonal
Applications	WB	Conjugation	Unconjugated
Form / Buffer	Liquid in 0.42% Potassium phosphate, 0.87% Sodium chloride, pH 7.3, 30% glycerol, and 0.01% sodium azide.		Storage at-20°C

BACKGROUND

SUMO-conjugating enzyme that accepts the SUMO proteins from the E1 SUMO-activating heterodimer SAE1/SAE2 and catalyzes its covalent attachment to other proteins with the E3 SUMO ligases SIZ1 and MMS21. Associates with SIZ1 for sumoylation of the transcription factor GTE3.

APPLICATION

To ensure optimal assay performance, AREX recommends conducting reagent titration tailored to each testing system for optimal detection results.

WB	1:500 - 1:2000
----	----------------

*Results are sample-specific. Please refer to your local assay conditions and test parameters for reference.

PRODUCT OVERVIEW

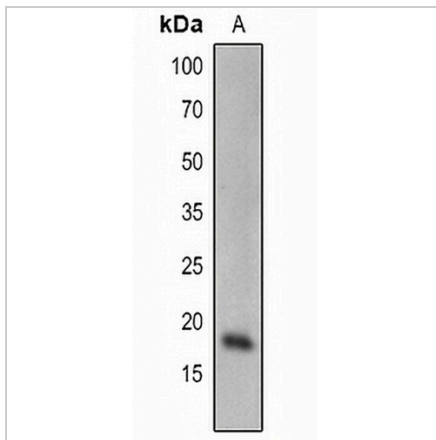
Description	Rabbit polyclonal antibody to SCE1
Specificity	Recognizes endogenous levels of SCE1 protein.
Antibody Type	Primary antibody
Immunogen	KLH-conjugated synthetic peptide encompassing a sequence within the N-term region of arabidopsis thaliana SCE1. The exact sequence is proprietary.
Purification	The antibody was purified by immunogen affinity chromatography.
Molecular Weight	Predicted: 17 kD; Observed: 18 kD
Form/Buffer	Liquid in 0.42% Potassium phosphate, 0.87% Sodium chloride, pH 7.3, 30% glycerol, and 0.01% sodium azide.
Alternative Names	AHUS5; EMB1637; SUMO-conjugating enzyme SCE1; Protein EMBRYO DEFECTIVE 1637; Protein hus5 homolog; SUMO-conjugating enzyme 1; AtSCE1
Gene Symbol	SCE1
Entrez Gene	824956(Human)
SwissProt	Q42551(Human)

*AREX continuously optimizes our products. Webpage content may not reflect the latest updates. For inquiries, please contact info@arexbio.com or your local distributor.

*Clone Number, Reactivity, Source/Host and Clonality can be found in the product name and Key Features section above.

DATASHEET**SCE1 Rabbit Polyclonal Antibody**

CAT. NO. APA12545

DATA

Western blot analysis of SCE1 expression in Arabidopsis thaliana (A) whole cell lysates.
(Predicted band size: 17 kD; Observed band size: 18 kD)

STORAGE

Store at 4°C short term. For long term storage, store at -20°C, avoiding freeze/thaw cycles.

NOTE

For Research Use Only. Not for diagnostic, therapeutics, prophylactic or in vivo use.