

DATASHEET

TIC40 Rabbit Polyclonal Antibody

CAT. NO. APA12546

KEY FEATURES

Target	TIC40	Source / Host	Rabbit
Reactivity	Arabidopsis thaliana	Clonality	Polyclonal
Applications	WB	Conjugation	Unconjugated
Form / Buffer	Liquid in 0.42% Potassium phosphate, 0.87% Sodium chloride, pH 7.3, 30% glycerol, and 0.01% sodium azide.		Storage at -20°C

BACKGROUND

Involved in protein precursor import into chloroplasts. Part of the motor complex consisting of a co-chaperone (TIC40) and a chaperone (HSP93) associated with the import channel (TIC110). Causes the release of bound transit peptides from TIC110 and stimulates ATP hydrolysis by HSP93. Involved in reinsertion of proteins from the chloroplast stroma into the inner membrane.

APPLICATION

To ensure optimal assay performance, AREX recommends conducting reagent titration tailored to each testing system for optimal detection results.

WB	1:500 - 1:2000
----	----------------

*Results are sample-specific. Please refer to your local assay conditions and test parameters for reference.

PRODUCT OVERVIEW

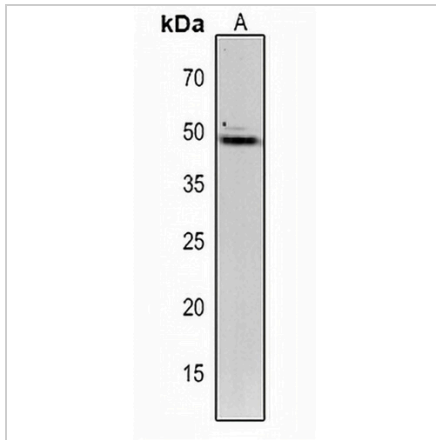
Description	Rabbit polyclonal antibody to TIC40
Specificity	Recognizes endogenous levels of TIC40 protein.
Antibody Type	Primary antibody
Immunogen	KLH-conjugated synthetic peptide encompassing a sequence within the C-term region of arabidopsis thaliana TIC40. The exact sequence is proprietary.
Purification	The antibody was purified by immunogen affinity chromatography.
Molecular Weight	Predicted: 48 kD; Observed: 49 kD
Form/Buffer	Liquid in 0.42% Potassium phosphate, 0.87% Sodium chloride, pH 7.3, 30% glycerol, and 0.01% sodium azide.
Alternative Names	PDE120; Protein TIC 40 chloroplastic; Protein PIGMENT DEFECTIVE EMBRYO 120; Translocon at the inner envelope membrane of chloroplasts 40; AtTIC40
Gene Symbol	TIC40
Entrez Gene	831524(Human)
SwissProt	Q9FMD5(Human)

*AREX continuously optimizes our products. Webpage content may not reflect the latest updates. For inquiries, please contact info@arexbio.com or your local distributor.

*Clone Number, Reactivity, Source/Host and Clonality can be found in the product name and Key Features section above.

DATASHEET**TIC40 Rabbit Polyclonal Antibody**

CAT. NO. APA12546

DATA

Western blot analysis of TIC40 expression in Arabidopsis thaliana (A) whole cell lysates.
(Predicted band size: 48 kD; Observed band size: 49 kD)

STORAGE

Store at 4°C short term. For long term storage, store at -20°C, avoiding freeze/thaw cycles.

NOTE

For Research Use Only. Not for diagnostic, therapeutics, prophylactic or in vivo use.