

DATASHEET

psbA Rabbit Polyclonal Antibody

CAT. NO. APA12549

KEY FEATURES

Target	psbA	Source / Host	Rabbit
Reactivity	Arabidopsis thaliana	Clonality	Polyclonal
Applications	WB	Conjugation	Unconjugated
Form / Buffer	Liquid in 0.42% Potassium phosphate, 0.87% Sodium chloride, pH 7.3, 30% glycerol, and 0.01% sodium azide.		Storage at -20°C

BACKGROUND

Photosystem II (PSII) is a light-driven water:plastoquinone oxidoreductase that uses light energy to abstract electrons from H₂O, generating O₂ and a proton gradient subsequently used for ATP formation. It consists of a core antenna complex that captures photons, and an electron transfer chain that converts photonic excitation into a charge separation. The D1/D2 (PsbA/PsbD) reaction center heterodimer binds P680, the primary electron donor of PSII as well as several subsequent electron acceptors.

APPLICATION

To ensure optimal assay performance, AREX recommends conducting reagent titration tailored to each testing system for optimal detection results.

WB	1:500 - 1:2000
----	----------------

*Results are sample-specific. Please refer to your local assay conditions and test parameters for reference.

PRODUCT OVERVIEW

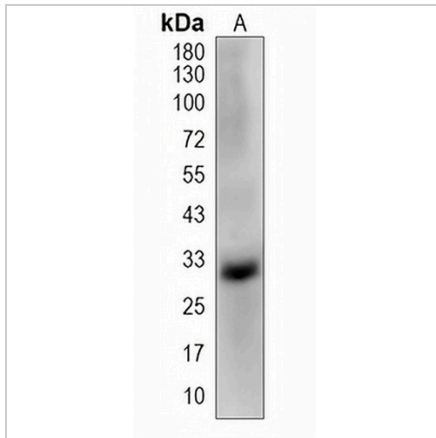
Description	Rabbit polyclonal antibody to psbA
Specificity	Recognizes endogenous levels of psbA protein.
Antibody Type	Primary antibody
Immunogen	KLH-conjugated synthetic peptide encompassing a sequence within the N-terminal region of arabidopsis thaliana psbA. The exact sequence is proprietary.
Purification	The antibody was purified by immunogen affinity chromatography.
Molecular Weight	Predicted: 38 kD; Observed: 30 kD
Form/Buffer	Liquid in 0.42% Potassium phosphate, 0.87% Sodium chloride, pH 7.3, 30% glycerol, and 0.01% sodium azide.
Alternative Names	Photosystem II protein D1; PSII D1 protein; Photosystem II Q(B) protein
Gene Symbol	psbA
Entrez Gene	844802(Human)
SwissProt	P83755(Human)

*AREX continuously optimizes our products. Webpage content may not reflect the latest updates. For inquiries, please contact info@arexbio.com or your local distributor.

*Clone Number, Reactivity, Source/Host and Clonality can be found in the product name and Key Features section above.

DATASHEET**psbA Rabbit Polyclonal Antibody**

CAT. NO. APA12549

DATA

Western blot analysis of psbA expression in Arabidopsis thaliana (A) whole cell lysates.
(Predicted band size: 38 kD; Observed band size: 30 kD)

STORAGE

Store at 4°C short term. For long term storage, store at -20°C, avoiding freeze/thaw cycles.

NOTE

For Research Use Only. Not for diagnostic, therapeutics, prophylactic or in vivo use.