

DATASHEET

LRP5 Rabbit Polyclonal Antibody

CAT. NO. APA12552

KEY FEATURES

Target	LRP5	Source / Host	Rabbit
Reactivity	Human, Mouse	Clonality	Polyclonal
Applications	WB	Conjugation	Unconjugated
Form / Buffer	Liquid in 0.42% Potassium phosphate, 0.87% Sodium chloride, pH 7.3, 30% glycerol, and 0.01% sodium azide.		Storage at -20°C

BACKGROUND

Acts as a coreceptor with members of the frizzled family of seven-transmembrane spanning receptors to transduce signal by Wnt proteins . Activates the canonical Wnt signaling pathway that controls cell fate determination and self-renewal during embryonic development and adult tissue regeneration . In particular, may play an important role in the development of the posterior patterning of the epiblast during gastrulation . During bone development, regulates osteoblast proliferation and differentiation thus determining bone mass . Mechanistically, the formation of the signaling complex between Wnt ligand, frizzled receptor and LRP5 coreceptor promotes the recruitment of AXIN1 to LRP5, stabilizing beta-catenin/CTNNB1 and activating TCF/LEF-mediated transcriptional programs .

APPLICATION

To ensure optimal assay performance, AREX recommends conducting reagent titration tailored to each testing system for optimal detection results.

WB	1:500 - 1:1000
----	----------------

*Results are sample-specific. Please refer to your local assay conditions and test parameters for reference.

PRODUCT OVERVIEW

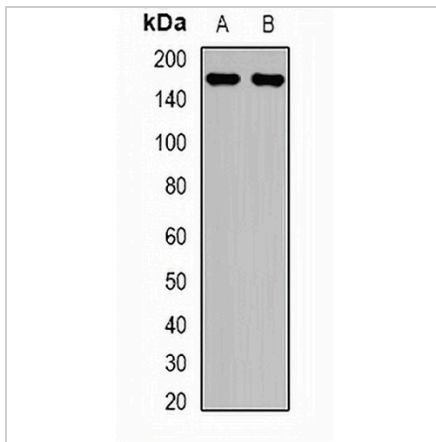
Description	Rabbit polyclonal antibody to LRP5
Specificity	Recognizes endogenous levels of LRP5 protein.
Antibody Type	Primary antibody
Immunogen	Recombinant fusion protein of mouse LRP5
Purification	The antibody was purified by immunogen affinity chromatography.
Molecular Weight	Predicted: 179 kD; Observed: 180-200 kD
Form/Buffer	Liquid in 0.42% Potassium phosphate, 0.87% Sodium chloride, pH 7.3, 30% glycerol, and 0.01% sodium azide.
Alternative Names	LR3; LRP7; Low-density lipoprotein receptor-related protein 5; LRP-5
Gene Symbol	LRP5
Entrez Gene	4041(Human); 16973(Mouse)
SwissProt	O75197(Human); Q91VN0(Mouse)

*AREX continuously optimizes our products. Webpage content may not reflect the latest updates. For inquiries, please contact info@arexbio.com or your local distributor.

*Clone Number, Reactivity, Source/Host and Clonality can be found in the product name and Key Features section above.

DATASHEET**LRP5 Rabbit Polyclonal Antibody**

CAT. NO. APA12552

DATA

Western blot analysis of LRP5 expression in mouse liver (A), HepG2 (B) whole cell lysates.
(Predicted band size: 179 kD; Observed band size: 180-200 kD)

STORAGE

Store at 4°C short term. For long term storage, store at -20°C, avoiding freeze/thaw cycles.

NOTE

For Research Use Only. Not for diagnostic, therapeutics, prophylactic or in vivo use.