

**DATASHEET**

**OLFM1 Rabbit Polyclonal Antibody**

CAT. NO. APA12554

**KEY FEATURES**

Target	OLFM1	Source / Host	Rabbit
Reactivity	Human	Clonality	Polyclonal
Applications	WB, IHC	Conjugation	Unconjugated
Form / Buffer	Liquid in 0.42% Potassium phosphate, 0.87% Sodium chloride, pH 7.3, 30% glycerol, and 0.01% sodium azide.		Storage at -20°C

**BACKGROUND**

Contributes to the regulation of axonal growth in the embryonic and adult central nervous system by inhibiting interactions between RTN4R and LINGO1. Inhibits RTN4R-mediated axon growth cone collapse. May play an important role in regulating the production of neural crest cells by the neural tube. May be required for normal responses to olfactory stimuli.

**APPLICATION**

To ensure optimal assay performance, AREX recommends conducting reagent titration tailored to each testing system for optimal detection results.

WB	1:500 - 1:1000
IHC	1:50 - 1:100

\*Results are sample-specific. Please refer to your local assay conditions and test parameters for reference.

**PRODUCT OVERVIEW**

Description	Rabbit polyclonal antibody to OLFM1
Specificity	Recognizes endogenous levels of OLFM1 protein.
Antibody Type	Primary antibody
Immunogen	Recombinant fusion protein of human OLFM1
Purification	The antibody was purified by immunogen affinity chromatography.
Molecular Weight	Predicted: 15-17; Observed: 55 kD
Form/Buffer	Liquid in 0.42% Potassium phosphate, 0.87% Sodium chloride, pH 7.3, 30% glycerol, and 0.01% sodium azide.
Alternative Names	NOE1; NOEL1; Noelin; Neuronal olfactomedin-related ER localized protein; Olfactomedin-1
Gene Symbol	OLFM1
Entrez Gene	10439(Human)
SwissProt	Q99784(Human)

\*AREX continuously optimizes our products. Webpage content may not reflect the latest updates. For inquiries, please contact [info@arexbio.com](mailto:info@arexbio.com) or your local distributor.

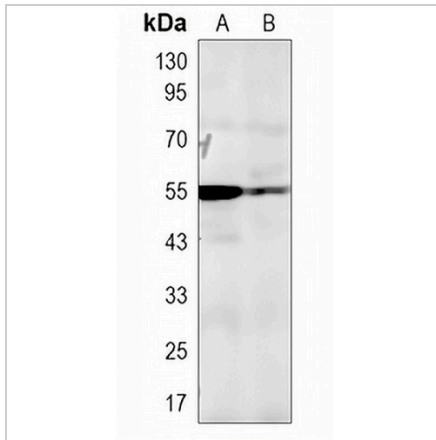
\*Clone Number, Reactivity, Source/Host and Clonality can be found in the product name and Key Features section above.

**DATASHEET**

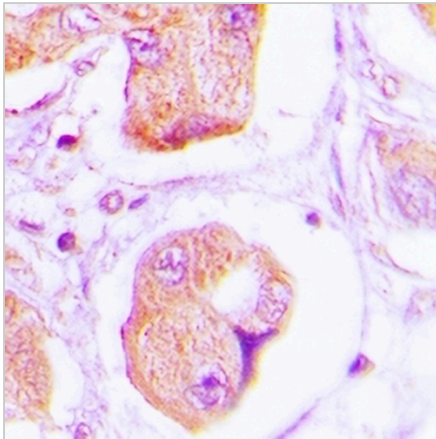
**OLFM1 Rabbit Polyclonal Antibody**

CAT. NO. APA12554

**DATA**



Western blot analysis of OLFM1 expression in HeLa (A), HepG2 (B) whole cell lysates. (Predicted band size: 15-17; 52-55 kD; Observed band size: 55 kD)



Immunohistochemical analysis of OLFM1 staining in human lung cancer formalin fixed paraffin embedded tissue section. The section was pre-treated using heat mediated antigen retrieval with sodium citrate buffer (pH 6.0). The section was then incubated with the antibody at room temperature and detected using an HRP conjugated compact polymer system. DAB was used as the chromogen. The section was then counterstained with haematoxylin and mounted with DPX.

**STORAGE**

Store at 4°C short term. For long term storage, store at -20°C, avoiding freeze/thaw cycles.

**NOTE**

For Research Use Only. Not for diagnostic, therapeutics, prophylactic or in vivo use.