

DATASHEET

CARD 8 Rabbit Polyclonal Antibody

CAT. NO. APA12557

KEY FEATURES

Target	CARD 8	Source / Host	Rabbit
Reactivity	Human	Clonality	Polyclonal
Applications	WB	Conjugation	Unconjugated
Form / Buffer	Liquid in 0.42% Potassium phosphate, 0.87% Sodium chloride, pH 7.3, 30% glycerol, and 0.01% sodium azide.		Storage at -20°C

BACKGROUND

Inflammasome sensor, which mediates inflammasome activation in response to various pathogen-associated signals, leading to subsequent pyroptosis of CD4(+) T-cells and macrophages T-cells and macrophages . Inflammasomes are supramolecular complexes that assemble in the cytosol in response to pathogens and other damage-associated signals and play critical roles in innate immunity and inflammation . Acts as a recognition receptor (PRR): recognizes specific pathogens and other damage-associated signals, such as HIV-1 protease activity or Val-boroPro inhibitor, and mediates CARD8 inflammasome activation .

APPLICATION

To ensure optimal assay performance, AREX recommends conducting reagent titration tailored to each testing system for optimal detection results.

WB	1:500 - 1:2000
----	----------------

*Results are sample-specific. Please refer to your local assay conditions and test parameters for reference.

PRODUCT OVERVIEW

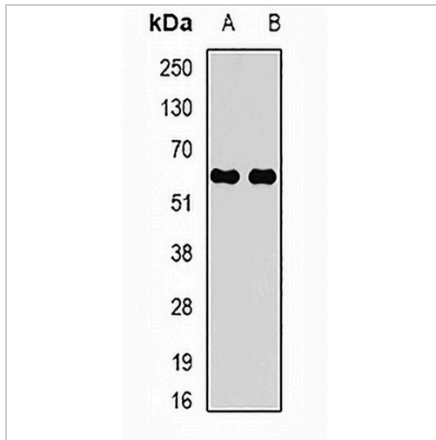
Description	Rabbit polyclonal antibody to CARD 8
Specificity	Recognizes endogenous levels of CARD 8 protein.
Antibody Type	Primary antibody
Immunogen	Recombinant fusion protein of human CARD 8
Purification	The antibody was purified by immunogen affinity chromatography.
Molecular Weight	Predicted: 32; Observed: 60 kD
Form/Buffer	Liquid in 0.42% Potassium phosphate, 0.87% Sodium chloride, pH 7.3, 30% glycerol, and 0.01% sodium azide.
Alternative Names	KIAA0955; NDPP1; Caspase recruitment domain-containing protein 8; Apoptotic protein NDPP1; CARD-inhibitor of NF-kappa-B-activating ligand; CARDINAL; DACAR; Tumor up-regulated CARD-containing antagonist of CASP9; TUCAN
Gene Symbol	CARD8
Entrez Gene	22900(Human)
SwissProt	Q9Y2G2(Human)

*AREX continuously optimizes our products. Webpage content may not reflect the latest updates. For inquiries, please contact info@arexbio.com or your local distributor.

*Clone Number, Reactivity, Source/Host and Clonality can be found in the product name and Key Features section above.

DATASHEET**CARD 8 Rabbit Polyclonal Antibody**

CAT. NO. APA12557

DATA

Western blot analysis of CARD 8 expression in K562 (A), ES2 (B) whole cell lysates.
(Predicted band size: 32; 44; 48; 55; 60 kD; Observed band size: 60 kD)

STORAGE

Store at 4°C short term. For long term storage, store at -20°C, avoiding freeze/thaw cycles.

NOTE

For Research Use Only. Not for diagnostic, therapeutics, prophylactic or in vivo use.