

**DATASHEET**

**Alpha-enolase Rabbit Polyclonal Antibody**

CAT. NO. APA12567

**KEY FEATURES**

Target	Alpha-enolase	Source / Host	Rabbit
Reactivity	Human, Mouse, Rat	Clonality	Polyclonal
Applications	WB, IHC, IF/ICC	Conjugation	Unconjugated
Form / Buffer	Liquid in 0.42% Potassium phosphate, 0.87% Sodium chloride, pH 7.3, 30% glycerol, and 0.01% sodium azide.		Storage at-20°C

**BACKGROUND**

Enolase that catalyzes the conversion of 2-phosphoglycerate to phosphoenolpyruvate in glycolysis and the reverse reaction in gluconeogenesis . Also involved in various processes such as growth control, hypoxia tolerance and allergic responses . May also function in the intravascular and pericellular fibrinolytic system due to its ability to serve as a receptor and activator of plasminogen on the cell surface of several cell-types such as leukocytes and neurons . Stimulates immunoglobulin production .

**APPLICATION**

To ensure optimal assay performance, AREX recommends conducting reagent titration tailored to each testing system for optimal detection results.

WB	1:500 - 1:2000
IHC	1:50 - 1:200
IF/ICC	1:50 - 1:200

\*Results are sample-specific. Please refer to your local assay conditions and test parameters for reference.

**PRODUCT OVERVIEW**

Description	Rabbit polyclonal antibody to Alpha-enolase
Specificity	Recognizes endogenous levels of Alpha-enolase protein.
Antibody Type	Primary antibody
Immunogen	Recombinant fusion protein of human Alpha-enolase
Purification	The antibody was purified by immunogen affinity chromatography.
Molecular Weight	Predicted: 36; Observed: 47 kD
Form/Buffer	Liquid in 0.42% Potassium phosphate, 0.87% Sodium chloride, pH 7.3, 30% glycerol, and 0.01% sodium azide.
Alternative Names	ENO1L1; MBPB1; MPB1; Alpha-enolase; 2-phospho-D-glycerate hydro-lyase; C-myc promoter-binding protein; Enolase 1; MBP-1; MPB-1; Non-neural enolase; NNE; Phosphopyruvate hydratase; Plasminogen-binding protein
Gene Symbol	ENO1
Entrez Gene	2023(Human); 13806; 433182(Mouse); 24333(Rat)
SwissProt	P06733(Human); P17182(Mouse); P04764(Rat)

\*AREX continuously optimizes our products. Webpage content may not reflect the latest updates. For inquiries, please contact [info@arexbio.com](mailto:info@arexbio.com) or your local distributor.

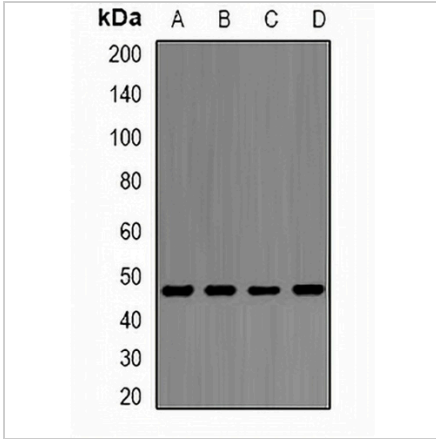
\*Clone Number, Reactivity, Source/Host and Clonality can be found in the product name and Key Features section above.

**DATASHEET**

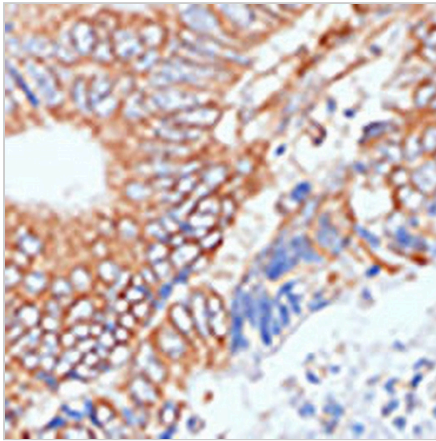
**Alpha-enolase Rabbit Polyclonal Antibody**

CAT. NO. APA12567

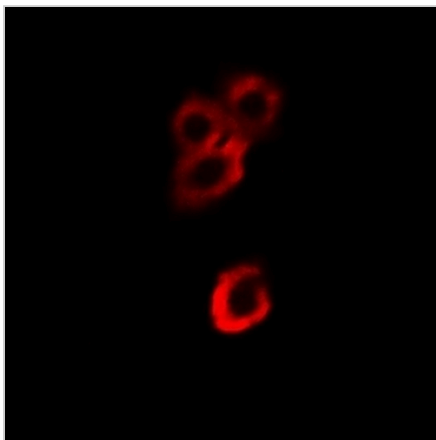
**DATA**



Western blot analysis of Alpha-enolase expression in PC3 (A), Ramos (B), HeLa (C), THP1 (D) whole cell lysates. (Predicted band size: 36; 47 kD; Observed band size: 47 kD)



Immunohistochemical analysis of Alpha-enolase staining in human colon cancer formalin fixed paraffin embedded tissue section. The section was pre-treated using heat mediated antigen retrieval with sodium citrate buffer (pH 6.0). The section was then incubated with the antibody at room temperature and detected using an HRP conjugated compact polymer system. DAB was used as the chromogen. The section was then counterstained with haematoxylin and mounted with DPX.



Immunofluorescent analysis of Alpha-enolase staining in HeLa cells. Formalin-fixed cells were permeabilized with 0.1% Triton X-100 in TBS for 5-10 minutes and blocked with 3% BSA-PBS for 30 minutes at room temperature. Cells were probed with the primary antibody in 3% BSA-PBS and incubated overnight at 4 °C in a humidified chamber. Cells were washed with PBST and incubated with a DyLight 594-conjugated secondary antibody (red) in PBS at room temperature in the dark.

**STORAGE**

Store at 4°C short term. For long term storage, store at -20°C, avoiding freeze/thaw cycles.

**NOTE**

For Research Use Only. Not for diagnostic, therapeutics, prophylactic or in vivo use.