

**DATASHEET**

**PHPT1 Rabbit Polyclonal Antibody**

CAT. NO. APA12575

**KEY FEATURES**

Target	PHPT1	Source / Host	Rabbit
Reactivity	Human, Mouse	Clonality	Polyclonal
Applications	WB	Conjugation	Unconjugated
Form / Buffer	Liquid in 0.42% Potassium phosphate, 0.87% Sodium chloride, pH 7.3, 30% glycerol, and 0.01% sodium azide.		Storage at -20°C

**BACKGROUND**

Exhibits phosphohistidine phosphatase activity.

**APPLICATION**

To ensure optimal assay performance, AREX recommends conducting reagent titration tailored to each testing system for optimal detection results.

WB	1:500 - 1:1000
----	----------------

\*Results are sample-specific. Please refer to your local assay conditions and test parameters for reference.

**PRODUCT OVERVIEW**

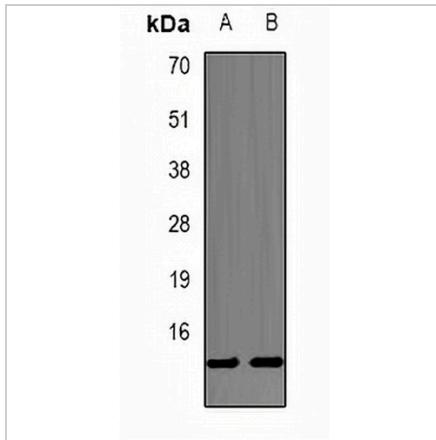
Description	Rabbit polyclonal antibody to PHPT1
Specificity	Recognizes endogenous levels of PHPT1 protein.
Antibody Type	Primary antibody
Immunogen	Recombinant fusion protein of human PHPT1
Purification	The antibody was purified by immunogen affinity chromatography.
Molecular Weight	Predicted: 13 kD; Observed: 13 kD
Form/Buffer	Liquid in 0.42% Potassium phosphate, 0.87% Sodium chloride, pH 7.3, 30% glycerol, and 0.01% sodium azide.
Alternative Names	PHP14; 14 kDa phosphohistidine phosphatase; Phosphohistidine phosphatase 1; Protein janus-A homolog
Gene Symbol	PHPT1
Entrez Gene	29085(Human); 75454(Mouse)
SwissProt	Q9NRX4(Human); Q9DAK9(Mouse)

\*AREX continuously optimizes our products. Webpage content may not reflect the latest updates. For inquiries, please contact [info@arexbio.com](mailto:info@arexbio.com) or your local distributor.

\*Clone Number, Reactivity, Source/Host and Clonality can be found in the product name and Key Features section above.

**DATASHEET****PHPT1 Rabbit Polyclonal Antibody**

CAT. NO. APA12575

**DATA**

Western blot analysis of PHPT1 expression in A549 (A), THP1 (B) whole cell lysates. (Predicted band size: 13 kD; Observed band size: 13 kD)

**STORAGE**

Store at 4°C short term. For long term storage, store at -20°C, avoiding freeze/thaw cycles.

**NOTE**

For Research Use Only. Not for diagnostic, therapeutics, prophylactic or in vivo use.