

DATASHEET

Fibrillarin Rabbit Polyclonal Antibody

CAT. NO. APA12578

KEY FEATURES

Target	Fibrillarin	Source / Host	Rabbit
Reactivity	Human, Mouse, Rat	Clonality	Polyclonal
Applications	WB, IF/ICC, IP	Conjugation	Unconjugated
Form / Buffer	Liquid in 0.42% Potassium phosphate, 0.87% Sodium chloride, pH 7.3, 30% glycerol, and 0.01% sodium azide.		Storage at -20°C

BACKGROUND

S-adenosyl-L-methionine-dependent methyltransferase that has the ability to methylate both RNAs and proteins . Involved in pre-rRNA processing by catalyzing the site-specific 2'-hydroxyl methylation of ribose moieties in pre-ribosomal RNA . Site specificity is provided by a guide RNA that base pairs with the substrate . Methylation occurs at a characteristic distance from the sequence involved in base pairing with the guide RNA . Probably catalyzes 2'-O-methylation of U6 snRNAs in box C/D RNP complexes . U6 snRNA 2'-O-methylation is required for mRNA splicing fidelity . Also acts as a protein methyltransferase by mediating methylation of 'Gln-105' of histone H2A (H2AQ104me), a modification that impairs binding of the FACT complex and is specifically present at 35S ribosomal DNA locus .

APPLICATION

To ensure optimal assay performance, AREX recommends conducting reagent titration tailored to each testing system for optimal detection results.

WB	1:500 - 1:2000
IF/ICC	1:50 - 1:200
IP	1:20 - 1:50

*Results are sample-specific. Please refer to your local assay conditions and test parameters for reference.

PRODUCT OVERVIEW

Description	Rabbit polyclonal antibody to Fibrillarin
Specificity	Recognizes endogenous levels of Fibrillarin protein.
Antibody Type	Primary antibody
Immunogen	Recombinant fusion protein of human Fibrillarin
Purification	The antibody was purified by immunogen affinity chromatography.
Molecular Weight	Predicted: 33 kD; Observed: 37 kD
Form/Buffer	Liquid in 0.42% Potassium phosphate, 0.87% Sodium chloride, pH 7.3, 30% glycerol, and 0.01% sodium azide.
Alternative Names	FIB1; FLRN; rRNA 2'-O-methyltransferase fibrillarin; 34 kDa nucleolar scleroderma antigen; Histone-glutamine methyltransferase
Gene Symbol	FBL
Entrez Gene	2091(Human); 102643269; 14113(Mouse); 292747(Rat)
SwissProt	P22087(Human); P35550(Mouse); P22509(Rat)

*AREX continuously optimizes our products. Webpage content may not reflect the latest updates. For inquiries, please contact info@arex.bio or your local distributor.

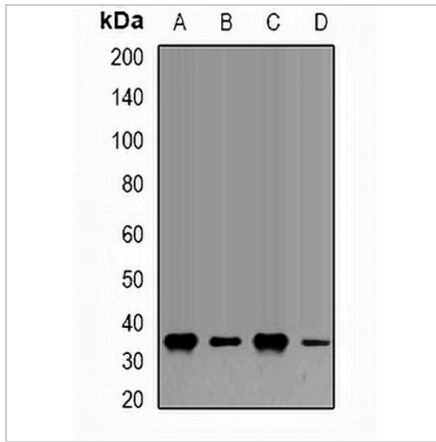
*Clone Number, Reactivity, Source/Host and Clonality can be found in the product name and Key Features section above.

DATASHEET

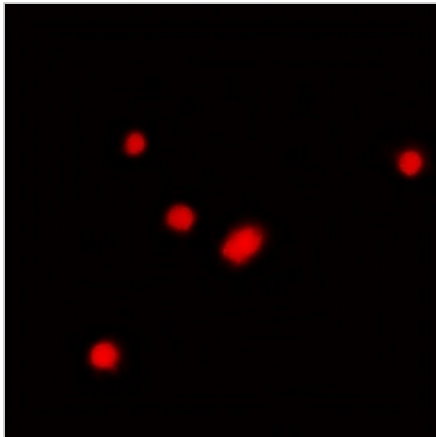
Fibrillarin Rabbit Polyclonal Antibody

CAT. NO. APA12578

DATA



Western blot analysis of Fibrillarin expression in HeLa (A), U2OS (B), COS7 (C), PC12 (D) whole cell lysates. (Predicted band size: 33 kD; Observed band size: 37 kD)



Immunofluorescent analysis of Fibrillarin staining in HeLa cells. Formalin-fixed cells were permeabilized with 0.1% Triton X-100 in TBS for 5-10 minutes and blocked with 3% BSA-PBS for 30 minutes at room temperature. Cells were probed with the primary antibody in 3% BSA-PBS and incubated overnight at 4 °C in a humidified chamber. Cells were washed with PBST and incubated with a DyLight 594-conjugated secondary antibody (red) in PBS at room temperature in the dark.

STORAGE

Store at 4°C short term. For long term storage, store at -20°C, avoiding freeze/thaw cycles.

NOTE

For Research Use Only. Not for diagnostic, therapeutics, prophylactic or in vivo use.