

**DATASHEET**
**GGA2 Rabbit Polyclonal Antibody**
**CAT. NO. APA12585**
**KEY FEATURES**

Target	GGA2	Source / Host	Rabbit
Reactivity	Human, Mouse	Clonality	Polyclonal
Applications	WB, IF/ICC	Conjugation	Unconjugated
Form / Buffer	Liquid in 0.42% Potassium phosphate, 0.87% Sodium chloride, pH 7.3, 30% glycerol, and 0.01% sodium azide.		Storage at -20°C

**BACKGROUND**

Plays a role in protein sorting and trafficking between the trans-Golgi network (TGN) and endosomes. Mediates the ARF-dependent recruitment of clathrin to the TGN and binds ubiquitinated proteins and membrane cargo molecules with a cytosolic acidic cluster-dileucine (DXLL) motif and endosomes. Mediates the ARF-dependent recruitment of clathrin to the TGN and binds ubiquitinated proteins and membrane cargo molecules with a cytosolic acidic cluster-dileucine (DXLL) motif. Mediates export of the GPCR receptor ADRA2B to the cell surface. Regulates retrograde transport of phosphorylated form of BACE1 from endosomes to the trans-Golgi network.

**APPLICATION**

To ensure optimal assay performance, AREX recommends conducting reagent titration tailored to each testing system for optimal detection results.

WB	1:500 - 1:1000
IF/ICC	1:50 - 1:200

\*Results are sample-specific. Please refer to your local assay conditions and test parameters for reference.

**PRODUCT OVERVIEW**

Description	Rabbit polyclonal antibody to GGA2
Specificity	Recognizes endogenous levels of GGA2 protein.
Antibody Type	Primary antibody
Immunogen	Recombinant fusion protein of human GGA2
Purification	The antibody was purified by immunogen affinity chromatography.
Molecular Weight	Predicted: 67 kD; Observed: 72-80 kD
Form/Buffer	Liquid in 0.42% Potassium phosphate, 0.87% Sodium chloride, pH 7.3, 30% glycerol, and 0.01% sodium azide.
Alternative Names	KIAA1080; ADP-ribosylation factor-binding protein GGA2; Gamma-adaptin-related protein 2; Golgi-localized, gamma ear-containing, ARF-binding protein 2; VHS domain and ear domain of gamma-adaptin; Vear
Gene Symbol	GGA2
Entrez Gene	23062(Human); 74105(Mouse)
SwissProt	Q9UJY4(Human); Q6P5E6(Mouse)

\*AREX continuously optimizes our products. Webpage content may not reflect the latest updates. For inquiries, please contact [info@arexbio.com](mailto:info@arexbio.com) or your local distributor.

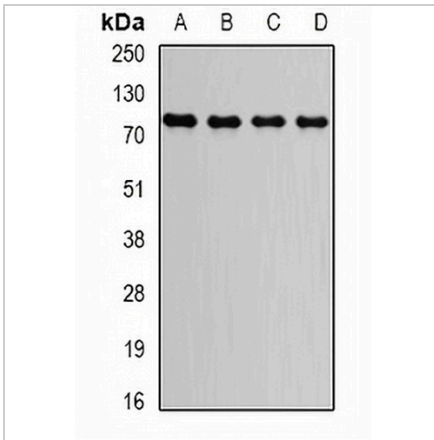
\*Clone Number, Reactivity, Source/Host and Clonality can be found in the product name and Key Features section above.

**DATASHEET**

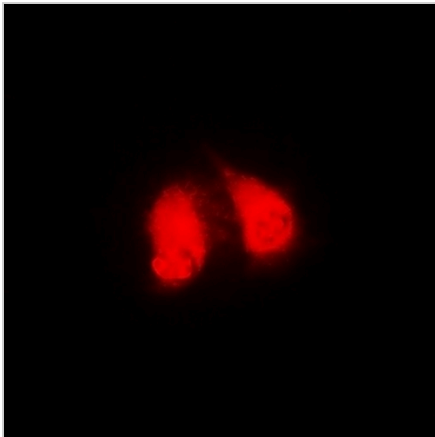
**GGA2 Rabbit Polyclonal Antibody**

CAT. NO. APA12585

**DATA**



Western blot analysis of GGA2 expression in HepG2 (A), Raji (B), MCF7 (C), mouse brain (D) whole cell lysates. (Predicted band size: 67 kD; Observed band size: 72-80 kD)



Immunofluorescent analysis of GGA2 staining in MCF7 cells. Formalin-fixed cells were permeabilized with 0.1% Triton X-100 in TBS for 5-10 minutes and blocked with 3% BSA-PBS for 30 minutes at room temperature. Cells were probed with the primary antibody in 3% BSA-PBS and incubated overnight at 4 °C in a humidified chamber. Cells were washed with PBST and incubated with a DyLight 594-conjugated secondary antibody (red) in PBS at room temperature in the dark.

**STORAGE**

Store at 4°C short term. For long term storage, store at -20°C, avoiding freeze/thaw cycles.

**NOTE**

For Research Use Only. Not for diagnostic, therapeutics, prophylactic or in vivo use.