

DATASHEET

SELENBP1 Rabbit Polyclonal Antibody

CAT. NO. APA12590

KEY FEATURES

Target	SELENBP1	Source / Host	Rabbit
Reactivity	Human, Mouse, Rat	Clonality	Polyclonal
Applications	WB, IF/ICC	Conjugation	Unconjugated
Form / Buffer	Liquid in 0.42% Potassium phosphate, 0.87% Sodium chloride, pH 7.3, 30% glycerol, and 0.01% sodium azide.		Storage at-20°C

BACKGROUND

Catalyzes the oxidation of methanethiol, an organosulfur compound known to be produced in substantial amounts by gut bacteria . Selenium-binding protein which may be involved in the sensing of reactive xenobiotics in the cytoplasm. May be involved in intra-Golgi protein transport .

APPLICATION

To ensure optimal assay performance, AREX recommends conducting reagent titration tailored to each testing system for optimal detection results.

WB	1:500 - 1:1000
IF/ICC	1:50 - 1:200

*Results are sample-specific. Please refer to your local assay conditions and test parameters for reference.

PRODUCT OVERVIEW

Description	Rabbit polyclonal antibody to SELENBP1
Specificity	Recognizes endogenous levels of SELENBP1 protein.
Antibody Type	Primary antibody
Immunogen	Recombinant fusion protein of human SELENBP1
Purification	The antibody was purified by immunogen affinity chromatography.
Molecular Weight	Predicted: 45; Observed: 55 kD
Form/Buffer	Liquid in 0.42% Potassium phosphate, 0.87% Sodium chloride, pH 7.3, 30% glycerol, and 0.01% sodium azide.
Alternative Names	SBP; Selenium-binding protein 1; 56 kDa selenium-binding protein; SBP56; SP56
Gene Symbol	SELENBP1
Entrez Gene	8991(Human); 20341(Mouse); 140927(Rat)
SwissProt	Q13228(Human); P17563(Mouse); Q8VIF7(Rat)

*AREX continuously optimizes our products. Webpage content may not reflect the latest updates. For inquiries, please contact info@arexbio.com or your local distributor.

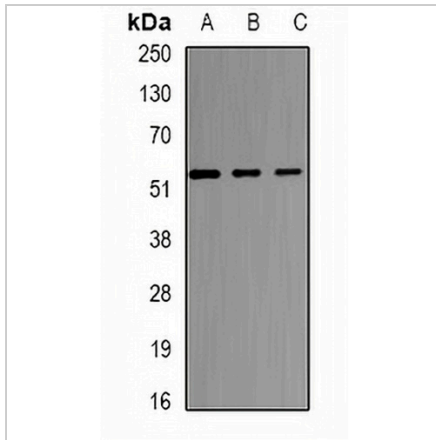
*Clone Number, Reactivity, Source/Host and Clonality can be found in the product name and Key Features section above.

DATASHEET

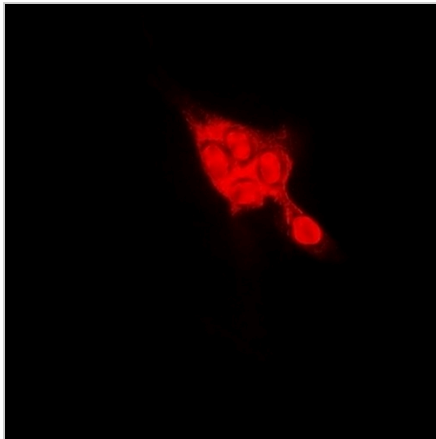
SELENBP1 Rabbit Polyclonal Antibody

CAT. NO. APA12590

DATA



Western blot analysis of SELENBP1 expression in HT29 (A), K562 (B), mouse kidney (C) whole cell lysates. (Predicted band size: 45; 52; 56 kD; Observed band size: 55 kD)



Immunofluorescent analysis of SELENBP1 staining in HeLa cells. Formalin-fixed cells were permeabilized with 0.1% Triton X-100 in TBS for 5-10 minutes and blocked with 3% BSA-PBS for 30 minutes at room temperature. Cells were probed with the primary antibody in 3% BSA-PBS and incubated overnight at 4 °C in a humidified chamber. Cells were washed with PBST and incubated with a DyLight 594-conjugated secondary antibody (red) in PBS at room temperature in the dark.

STORAGE

Store at 4°C short term. For long term storage, store at -20°C, avoiding freeze/thaw cycles.

NOTE

For Research Use Only. Not for diagnostic, therapeutics, prophylactic or in vivo use.