

**DATASHEET**

**CARD4 Rabbit Polyclonal Antibody**

CAT. NO. APA12593

**KEY FEATURES**

Target	CARD4	Source / Host	Rabbit
Reactivity	Human, Mouse	Clonality	Polyclonal
Applications	WB, IHC	Conjugation	Unconjugated
Form / Buffer	Liquid in 0.42% Potassium phosphate, 0.87% Sodium chloride, pH 7.3, 30% glycerol, and 0.01% sodium azide.		Storage at -20°C

**BACKGROUND**

Pattern recognition receptor (PRR) that detects bacterial peptidoglycan fragments and other danger signals and thus participates in both innate and adaptive immune responses that detects bacterial peptidoglycan fragments and other danger signals and thus participates in both innate and adaptive immune responses . Specifically recognizes and binds gamma-D-glutamyl-meso-diaminopimelic acid (iE-DAP), a dipeptide present in peptidoglycan of Gram-negative bacteria . Preferentially binds iE-DAP in tripeptide-containing muropeptides (MurNAc-TriDAP or TriDAP) . Ligand binding triggers oligomerization that facilitates the binding and subsequent activation of the proximal adapter receptor-interacting RIPK2 .

**APPLICATION**

To ensure optimal assay performance, AREX recommends conducting reagent titration tailored to each testing system for optimal detection results.

WB	1:500 - 1:2000
IHC	1:50 - 1:200

\*Results are sample-specific. Please refer to your local assay conditions and test parameters for reference.

**PRODUCT OVERVIEW**

Description	Rabbit polyclonal antibody to CARD4
Specificity	Recognizes endogenous levels of CARD4 protein.
Antibody Type	Primary antibody
Immunogen	Recombinant fusion protein of human CARD4
Purification	The antibody was purified by immunogen affinity chromatography.
Molecular Weight	Predicted: 27; Observed: 108 kD
Form/Buffer	Liquid in 0.42% Potassium phosphate, 0.87% Sodium chloride, pH 7.3, 30% glycerol, and 0.01% sodium azide.
Alternative Names	CARD4; Nucleotide-binding oligomerization domain-containing protein 1; Caspase recruitment domain-containing protein 4
Gene Symbol	NOD1
Entrez Gene	10392(Human); 107607(Mouse)
SwissProt	Q9Y239(Human); Q8BHB0(Mouse)

\*AREX continuously optimizes our products. Webpage content may not reflect the latest updates. For inquiries, please contact [info@arexbio.com](mailto:info@arexbio.com) or your local distributor.

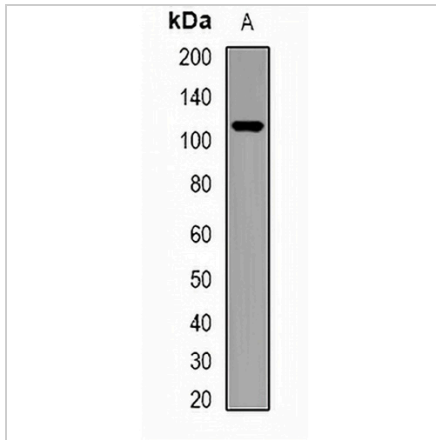
\*Clone Number, Reactivity, Source/Host and Clonality can be found in the product name and Key Features section above.

**DATASHEET**

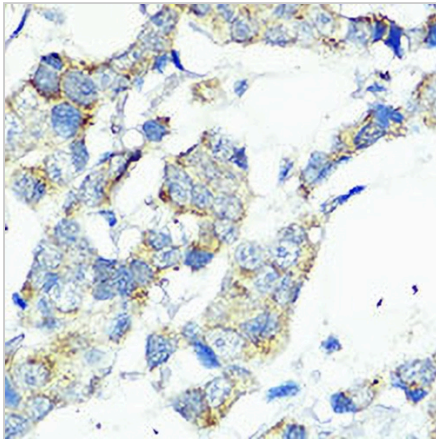
**CARD4 Rabbit Polyclonal Antibody**

CAT. NO. APA12593

**DATA**



Western blot analysis of CARD4 expression in mouse lung (A) whole cell lysates. (Predicted band size: 27; 107 kD; Observed band size: 108 kD)



Immunohistochemical analysis of CARD4 staining in human breast cancer formalin fixed paraffin embedded tissue section. The section was pre-treated using heat mediated antigen retrieval with sodium citrate buffer (pH 6.0). The section was then incubated with the antibody at room temperature and detected using an HRP conjugated compact polymer system. DAB was used as the chromogen. The section was then counterstained with haematoxylin and mounted with DPX.

**STORAGE**

Store at 4°C short term. For long term storage, store at -20°C, avoiding freeze/thaw cycles.

**NOTE**

For Research Use Only. Not for diagnostic, therapeutics, prophylactic or in vivo use.