

DATASHEET

CBS Rabbit Polyclonal Antibody

CAT. NO. APA12597

KEY FEATURES

Target	CBS	Source / Host	Rabbit
Reactivity	Human, Mouse, Rat	Clonality	Polyclonal
Applications	WB, IF/ICC	Conjugation	Unconjugated
Form / Buffer	Liquid in 0.42% Potassium phosphate, 0.87% Sodium chloride, pH 7.3, 30% glycerol, and 0.01% sodium azide.		Storage at -20°C

BACKGROUND

Hydro-lyase catalyzing the first step of the transsulfuration pathway, where the hydroxyl group of L-serine is displaced by L-homocysteine in a beta-replacement reaction to form L-cystathionine, the precursor of L-cysteine. This catabolic route allows the elimination of L-methionine and the toxic metabolite L-homocysteine. Also involved in the production of hydrogen sulfide, a gasotransmitter with signaling and cytoprotective effects on neurons.

APPLICATION

To ensure optimal assay performance, AREX recommends conducting reagent titration tailored to each testing system for optimal detection results.

WB	1:500 - 1:1000
IF/ICC	1:50 - 1:200

*Results are sample-specific. Please refer to your local assay conditions and test parameters for reference.

PRODUCT OVERVIEW

Description	Rabbit polyclonal antibody to CBS
Specificity	Recognizes endogenous levels of CBS protein.
Antibody Type	Primary antibody
Immunogen	Recombinant fusion protein of human CBS
Purification	The antibody was purified by immunogen affinity chromatography.
Molecular Weight	Predicted: 60; Observed: 61 kD
Form/Buffer	Liquid in 0.42% Potassium phosphate, 0.87% Sodium chloride, pH 7.3, 30% glycerol, and 0.01% sodium azide.
Alternative Names	Cystathionine beta-synthase; Beta-thionase; Serine sulfhydrase
Gene Symbol	CBS
Entrez Gene	102724560; 875(Human); 12411(Mouse); 24250(Rat)
SwissProt	P35520(Human); Q91WT9(Mouse); P32232(Rat)

*AREX continuously optimizes our products. Webpage content may not reflect the latest updates. For inquiries, please contact info@arexbio.com or your local distributor.

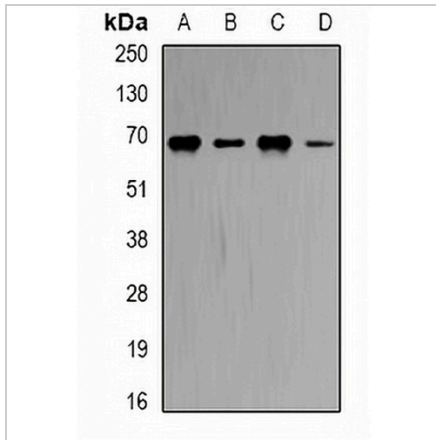
*Clone Number, Reactivity, Source/Host and Clonality can be found in the product name and Key Features section above.

DATASHEET

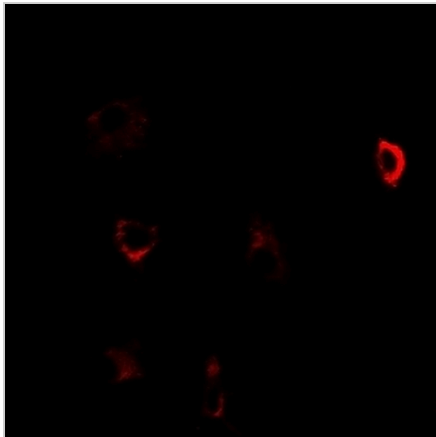
CBS Rabbit Polyclonal Antibody

CAT. NO. APA12597

DATA



Western blot analysis of CBS expression in Hela (A), MCF7 (B), Romas (C), mouse brain (D) whole cell lysates. (Predicted band size: 60; 61 kD; Observed band size: 61 kD)



Immunofluorescent analysis of CBS staining in U2OS cells. Formalin-fixed cells were permeabilized with 0.1% Triton X-100 in TBS for 5-10 minutes and blocked with 3% BSA-PBS for 30 minutes at room temperature. Cells were probed with the primary antibody in 3% BSA-PBS and incubated overnight at 4 °C in a humidified chamber. Cells were washed with PBST and incubated with a DyLight 594-conjugated secondary antibody (red) in PBS at room temperature in the dark.

STORAGE

Store at 4°C short term. For long term storage, store at -20°C, avoiding freeze/thaw cycles.

NOTE

For Research Use Only. Not for diagnostic, therapeutics, prophylactic or in vivo use.