

DATASHEET

NAT1 Rabbit Polyclonal Antibody

CAT. NO. APA12603

KEY FEATURES

| | | | |
|---------------|---|---------------|--------------------|
| Target | NAT1 | Source / Host | Rabbit |
| Reactivity | Human | Clonality | Polyclonal |
| Applications | WB, IHC | Conjugation | Unconjugated |
| Form / Buffer | Liquid in 0.42% Potassium phosphate, 0.87% Sodium chloride, pH 7.3, 30% glycerol, and 0.01% sodium azide. | | Storage at-20°C |

BACKGROUND

Participates in the detoxification of a plethora of hydrazine and arylamine drugs. Catalyzes the N- or O-acetylation of various arylamine and heterocyclic amine substrates and is able to bioactivate several known carcinogens.

APPLICATION

To ensure optimal assay performance, AREX recommends conducting reagent titration tailored to each testing system for optimal detection results.

| | |
|-----|----------------|
| WB | 1:500 - 1:2000 |
| IHC | 1:50 - 1:200 |

*Results are sample-specific. Please refer to your local assay conditions and test parameters for reference.

PRODUCT OVERVIEW

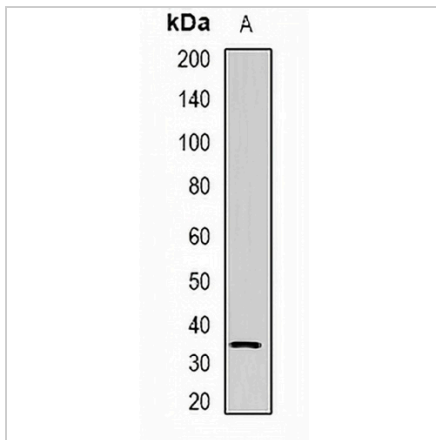
| | |
|-------------------|--|
| Description | Rabbit polyclonal antibody to NAT1 |
| Specificity | Recognizes endogenous levels of NAT1 protein. |
| Antibody Type | Primary antibody |
| Immunogen | Recombinant fusion protein of human NAT1 |
| Purification | The antibody was purified by immunogen affinity chromatography. |
| Molecular Weight | Predicted: 33 kD; Observed: 33 kD |
| Form/Buffer | Liquid in 0.42% Potassium phosphate, 0.87% Sodium chloride, pH 7.3, 30% glycerol, and 0.01% sodium azide. |
| Alternative Names | AAC1; Arylamine N-acetyltransferase 1; Arylamide acetylase 1; Monomorphic arylamine N-acetyltransferase; MNAT; N-acetyltransferase type 1; NAT-1 |
| Gene Symbol | NAT1 |
| Entrez Gene | 9(Human) |
| SwissProt | P18440(Human) |

*AREX continuously optimizes our products. Webpage content may not reflect the latest updates. For inquiries, please contact info@arexbio.com or your local distributor.

*Clone Number, Reactivity, Source/Host and Clonality can be found in the product name and Key Features section above.

DATASHEET**NAT1 Rabbit Polyclonal Antibody**

CAT. NO. APA12603

DATA

Western blot analysis of NAT1 expression in U937 (A) whole cell lysates. (Predicted band size: 33 kD; Observed band size: 33 kD)

STORAGE

Store at 4°C short term. For long term storage, store at -20°C, avoiding freeze/thaw cycles.

NOTE

For Research Use Only. Not for diagnostic, therapeutics, prophylactic or in vivo use.