

**DATASHEET**

**SIN3A Rabbit Polyclonal Antibody**

CAT. NO. APA12604

**KEY FEATURES**

|               |   |               |                    |
|---------------|---|---------------|--------------------|
| Target        | SIN3A   | Source / Host | Rabbit             |
| Reactivity    | Human, Mouse, Rat   | Clonality     | Polyclonal         |
| Applications  | WB  | Conjugation   | Unconjugated       |
| Form / Buffer | Liquid in 0.42% Potassium phosphate, 0.87% Sodium chloride, pH 7.3, 30% glycerol, and 0.01% sodium azide. |               | Storage<br>at-20°C |

**BACKGROUND**

Acts as a transcriptional repressor. Corepressor for REST. Interacts with MXI1 to repress MYC responsive genes and antagonize MYC oncogenic activities. Also interacts with MXD1-MAX heterodimers to repress transcription by tethering SIN3A to DNA. Acts cooperatively with OGT to repress transcription in parallel with histone deacetylation. Involved in the control of the circadian rhythms. Required for the transcriptional repression of circadian target genes, such as PER1, mediated by the large PER complex through histone deacetylation. Cooperates with FOXP1 to regulate cell cycle progression probably by repressing cell cycle inhibitor genes expression . Required for cortical neuron differentiation and callosal axon elongation .

**APPLICATION**

To ensure optimal assay performance, AREX recommends conducting reagent titration tailored to each testing system for optimal detection results.

|    |                |
|----|----------------|
| WB | 1:500 - 1:1000 |
|----|----------------|

\*Results are sample-specific. Please refer to your local assay conditions and test parameters for reference.

**PRODUCT OVERVIEW**

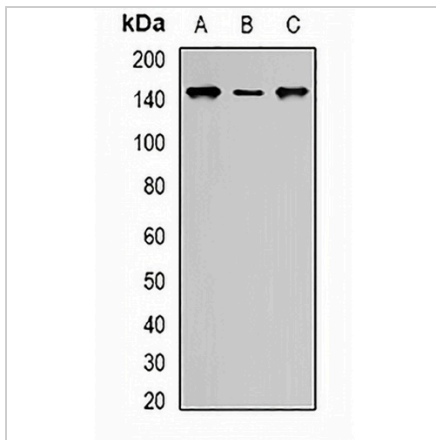
|                   |  |
|-------------------|--|
| Description       | Rabbit polyclonal antibody to SIN3A  |
| Specificity       | Recognizes endogenous levels of SIN3A protein.   |
| Antibody Type     | Primary antibody   |
| Immunogen         | Recombinant fusion protein of human SIN3A  |
| Purification      | The antibody was purified by immunogen affinity chromatography.  |
| Molecular Weight  | Predicted: 145 kD; Observed: 147 kD  |
| Form/Buffer       | Liquid in 0.42% Potassium phosphate, 0.87% Sodium chloride, pH 7.3, 30% glycerol, and 0.01% sodium azide.            |
| Alternative Names | Paired amphipathic helix protein Sin3a; Histone deacetylase complex subunit Sin3a; Transcriptional corepressor Sin3a |
| Gene Symbol       | SIN3A  |
| Entrez Gene       | 25942(Human); 20466(Mouse)   |
| SwissProt         | Q96ST3(Human); Q60520(Mouse)   |

\*AREX continuously optimizes our products. Webpage content may not reflect the latest updates. For inquiries, please contact [info@arexbio.com](mailto:info@arexbio.com) or your local distributor.

\*Clone Number, Reactivity, Source/Host and Clonality can be found in the product name and Key Features section above.

**DATASHEET****SIN3A Rabbit Polyclonal Antibody**

CAT. NO. APA12604

**DATA**

Western blot analysis of SIN3A expression in HeLa (A), MCF7 (B), COS7 (C) whole cell lysates. (Predicted band size: 145 kD; Observed band size: 147 kD)

**STORAGE**

Store at 4°C short term. For long term storage, store at -20°C, avoiding freeze/thaw cycles.

**NOTE**

For Research Use Only. Not for diagnostic, therapeutics, prophylactic or in vivo use.