

DATASHEET

Dysbindin 1 Rabbit Polyclonal Antibody

CAT. NO. APA12609

KEY FEATURES

Target	Dysbindin 1	Source / Host	Rabbit
Reactivity	Human, Mouse, Rat	Clonality	Polyclonal
Applications	WB, IHC	Conjugation	Unconjugated
Form / Buffer	Liquid in 0.42% Potassium phosphate, 0.87% Sodium chloride, pH 7.3, 30% glycerol, and 0.01% sodium azide.		Storage at -20°C

BACKGROUND

Component of the BLOC-1 complex, a complex that is required for normal biogenesis of lysosome-related organelles (LRO), such as platelet dense granules and melanosomes. In concert with the AP-3 complex, the BLOC-1 complex is required to target membrane protein cargos into vesicles assembled at cell bodies for delivery into neurites and nerve terminals. The BLOC-1 complex, in association with SNARE proteins, is also proposed to be involved in neurite extension. Associates with the BLOC-2 complex to facilitate the transport of TYRP1 independent of AP-3 function. Plays a role in synaptic vesicle trafficking and in neurotransmitter release. Plays a role in the regulation of cell surface exposure of DRD2. May play a role in actin cytoskeleton reorganization and neurite outgrowth.

APPLICATION

To ensure optimal assay performance, AREX recommends conducting reagent titration tailored to each testing system for optimal detection results.

WB	1:500 - 1:1000
IHC	1:50 - 1:200

*Results are sample-specific. Please refer to your local assay conditions and test parameters for reference.

PRODUCT OVERVIEW

Description	Rabbit polyclonal antibody to Dysbindin 1
Specificity	Recognizes endogenous levels of Dysbindin 1 protein.
Antibody Type	Primary antibody
Immunogen	Recombinant fusion protein of human Dysbindin 1
Purification	The antibody was purified by immunogen affinity chromatography.
Molecular Weight	Predicted: 30; Observed: 48 kD
Form/Buffer	Liquid in 0.42% Potassium phosphate, 0.87% Sodium chloride, pH 7.3, 30% glycerol, and 0.01% sodium azide.
Alternative Names	BLOC1S8; Dysbindin; Biogenesis of lysosome-related organelles complex 1 subunit 8; BLOC-1 subunit 8; Dysbindin-1; Dystrobrevin-binding protein 1; Hermansky-Pudlak syndrome 7 protein; HPS7 protein
Gene Symbol	DTNBP1
Entrez Gene	84062(Human); 94245(Mouse); 641528(Rat)
SwissProt	Q96EV8(Human); Q91WZ8(Mouse); Q5M834(Rat)

*AREX continuously optimizes our products. Webpage content may not reflect the latest updates. For inquiries, please contact info@arexbio.com or your local distributor.

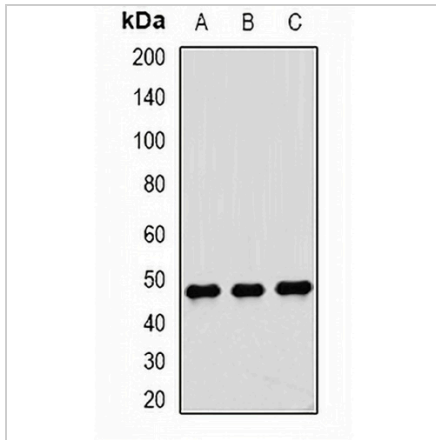
*Clone Number, Reactivity, Source/Host and Clonality can be found in the product name and Key Features section above.

DATASHEET

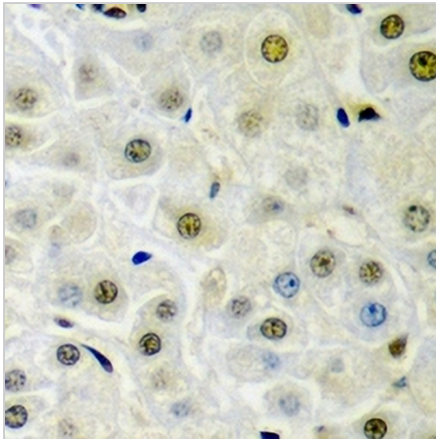
Dysbindin 1 Rabbit Polyclonal Antibody

CAT. NO. APA12609

DATA



Western blot analysis of Dysbindin 1 expression in Jurkat (A), HepG2 (B), MCF7 (C) whole cell lysates. (Predicted band size: 30; 34; 39 kD; Observed band size: 48 kD)



Immunohistochemical analysis of Dysbindin 1 staining in rat liver formalin fixed paraffin embedded tissue section. The section was pre-treated using heat mediated antigen retrieval with sodium citrate buffer (pH 6.0). The section was then incubated with the antibody at room temperature and detected using an HRP conjugated compact polymer system. DAB was used as the chromogen. The section was then counterstained with haematoxylin and mounted with DPX.

STORAGE

Store at 4°C short term. For long term storage, store at -20°C, avoiding freeze/thaw cycles.

NOTE

For Research Use Only. Not for diagnostic, therapeutics, prophylactic or in vivo use.