

**DATASHEET**

**CAP18 Rabbit Polyclonal Antibody**

CAT. NO. APA12611

**KEY FEATURES**

Target	CAP18	Source / Host	Rabbit
Reactivity	Human, Mouse	Clonality	Polyclonal
Applications	WB, IHC	Conjugation	Unconjugated
Form / Buffer	Liquid in 0.42% Potassium phosphate, 0.87% Sodium chloride, pH 7.3, 30% glycerol, and 0.01% sodium azide.		Storage at -20°C

**BACKGROUND**

Antimicrobial protein that is an integral component of the innate immune system . Binds to bacterial lipopolysaccharides (LPS) . Acts via neutrophil N-formyl peptide receptors to enhance the release of CXCL2 . Postsecretory processing generates multiple cathelicidin antimicrobial peptides with various lengths which act as a topical antimicrobial defense in sweat on skin . The unprocessed precursor form, cathelicidin antimicrobial peptide, inhibits the growth of Gram-negative E.coli and E.aerogenes with efficiencies comparable to that of the mature peptide LL-37 (in vitro) .

**APPLICATION**

To ensure optimal assay performance, AREX recommends conducting reagent titration tailored to each testing system for optimal detection results.

WB	1:500 - 1:2000
IHC	1:50 - 1:200
IF/ICC	1:50 - 1:200

\*Results are sample-specific. Please refer to your local assay conditions and test parameters for reference.

**PRODUCT OVERVIEW**

Description	Rabbit polyclonal antibody to CAP18
Specificity	Recognizes endogenous levels of CAP18 protein.
Antibody Type	Primary antibody
Immunogen	Recombinant fusion protein of human CAP18
Purification	The antibody was purified by immunogen affinity chromatography.
Molecular Weight	Predicted: 19 kD; Observed: 18 kD
Form/Buffer	Liquid in 0.42% Potassium phosphate, 0.87% Sodium chloride, pH 7.3, 30% glycerol, and 0.01% sodium azide.
Alternative Names	CAP18; FALL39; Cathelicidin antimicrobial peptide; 18 kDa cationic antimicrobial protein; CAP-18; hCAP-18
Gene Symbol	CAMP
Entrez Gene	820(Human)
SwissProt	P49913(Human)

\*AREX continuously optimizes our products. Webpage content may not reflect the latest updates. For inquiries, please contact [info@arexbio.com](mailto:info@arexbio.com) or your local distributor.

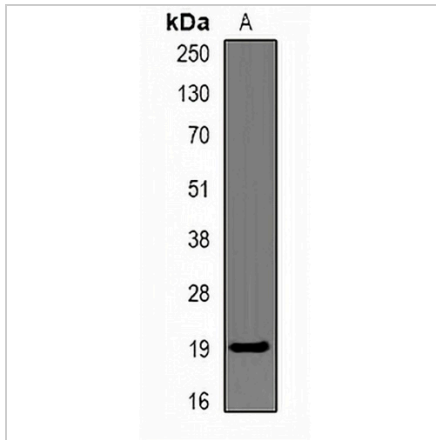
\*Clone Number, Reactivity, Source/Host and Clonality can be found in the product name and Key Features section above.

**DATASHEET**

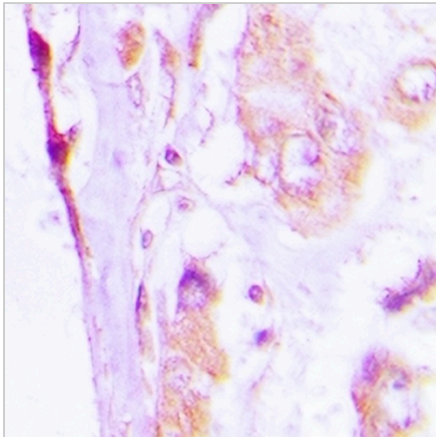
**CAP18 Rabbit Polyclonal Antibody**

CAT. NO. APA12611

**DATA**



Western blot analysis of CAP18 expression in mouse liver (A) whole cell lysates. (Predicted band size: 19 kD; Observed band size: 18 kD)



Immunohistochemical analysis of CAP18 staining in human lung cancer formalin fixed paraffin embedded tissue section. The section was pre-treated using heat mediated antigen retrieval with sodium citrate buffer (pH 6.0). The section was then incubated with the antibody at room temperature and detected using an HRP conjugated compact polymer system. DAB was used as the chromogen. The section was then counterstained with haematoxylin and mounted with DPX.

**STORAGE**

Store at 4°C short term. For long term storage, store at -20°C, avoiding freeze/thaw cycles.

**NOTE**

For Research Use Only. Not for diagnostic, therapeutics, prophylactic or in vivo use.