

**DATASHEET**

**XBP1 Rabbit Polyclonal Antibody**

CAT. NO. APA12616

**KEY FEATURES**

Target	XBP1	Source / Host	Rabbit
Reactivity	Human	Clonality	Polyclonal
Applications	WB	Conjugation	Unconjugated
Form / Buffer	Liquid in 0.42% Potassium phosphate, 0.87% Sodium chloride, pH 7.3, 30% glycerol, and 0.01% sodium azide.		Storage at-20°C

**BACKGROUND**

Functions as a transcription factor during endoplasmic reticulum (ER) stress by regulating the unfolded protein response (UPR). Required for cardiac myogenesis and hepatogenesis during embryonic development, and the development of secretory tissues such as exocrine pancreas and salivary gland . Involved in terminal differentiation of B lymphocytes to plasma cells and production of immunoglobulins stress by regulating the unfolded protein response (UPR). Required for cardiac myogenesis and hepatogenesis during embryonic development, and the development of secretory tissues such as exocrine pancreas and salivary gland . Involved in terminal differentiation of B lymphocytes to plasma cells and production of immunoglobulins .

**APPLICATION**

To ensure optimal assay performance, AREX recommends conducting reagent titration tailored to each testing system for optimal detection results.

WB	1:500 - 1:1000
----	----------------

\*Results are sample-specific. Please refer to your local assay conditions and test parameters for reference.

**PRODUCT OVERVIEW**

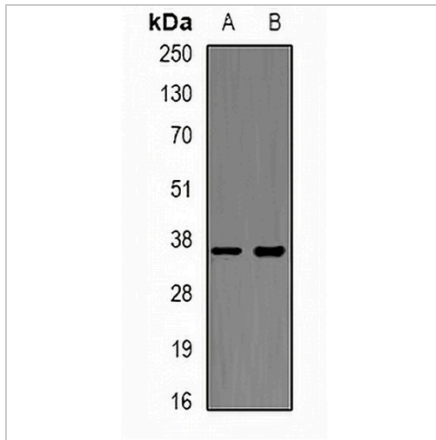
Description	Rabbit polyclonal antibody to XBP1
Specificity	Recognizes endogenous levels of XBP1 protein.
Antibody Type	Primary antibody
Immunogen	Recombinant fusion protein of human XBP1
Purification	The antibody was purified by immunogen affinity chromatography.
Molecular Weight	Predicted: 28; Observed: 35; 55; 60 kD
Form/Buffer	Liquid in 0.42% Potassium phosphate, 0.87% Sodium chloride, pH 7.3, 30% glycerol, and 0.01% sodium azide.
Alternative Names	TREB5; XBP2; X-box-binding protein 1; XBP-1; Tax-responsive element-binding protein 5
Gene Symbol	XBP1
Entrez Gene	7494(Human)
SwissProt	P17861(Human)

\*AREX continuously optimizes our products. Webpage content may not reflect the latest updates. For inquiries, please contact [info@arexbio.com](mailto:info@arexbio.com) or your local distributor.

\*Clone Number, Reactivity, Source/Host and Clonality can be found in the product name and Key Features section above.

**DATASHEET****XBP1 Rabbit Polyclonal Antibody**

CAT. NO. APA12616

**DATA**

Western blot analysis of XBP1 expression in HT29 (A), Jurkat (B) whole cell lysates. (Predicted band size: 28; 40 kD; Observed band size: 35; 55; 60 kD)

**STORAGE**

Store at 4°C short term. For long term storage, store at -20°C, avoiding freeze/thaw cycles.

**NOTE**

For Research Use Only. Not for diagnostic, therapeutics, prophylactic or in vivo use.