

DATASHEET

FKBP12 Rabbit Polyclonal Antibody

CAT. NO. APA12619

KEY FEATURES

| | | | |
|---------------|---|---------------|---------------------|
| Target | FKBP12 | Source / Host | Rabbit |
| Reactivity | Human, Mouse, Rat | Clonality | Polyclonal |
| Applications | WB, IHC | Conjugation | Unconjugated |
| Form / Buffer | Liquid in 0.42% Potassium phosphate, 0.87% Sodium chloride, pH 7.3, 30% glycerol, and 0.01% sodium azide. | | Storage at -20°C |

BACKGROUND

Keeps in an inactive conformation TGFBR1, the TGF-beta type I serine/threonine kinase receptor, preventing TGF-beta receptor activation in absence of ligand. Recruits SMAD7 to ACVR1B which prevents the association of SMAD2 and SMAD3 with the activin receptor complex, thereby blocking the activin signal. May modulate the RYR1 calcium channel activity. PPIases accelerate the folding of proteins. It catalyzes the cis-trans isomerization of proline imidic peptide bonds in oligopeptides.

APPLICATION

To ensure optimal assay performance, AREX recommends conducting reagent titration tailored to each testing system for optimal detection results.

| | |
|-----|----------------|
| WB | 1:500 - 1:2000 |
| IHC | 1:50 - 1:200 |

*Results are sample-specific. Please refer to your local assay conditions and test parameters for reference.

PRODUCT OVERVIEW

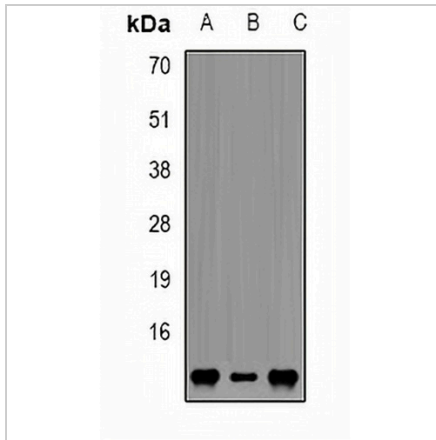
| | |
|-------------------|---|
| Description | Rabbit polyclonal antibody to FKBP12 |
| Specificity | Recognizes endogenous levels of FKBP12 protein. |
| Antibody Type | Primary antibody |
| Immunogen | Recombinant fusion protein of human FKBP12 |
| Purification | The antibody was purified by immunogen affinity chromatography. |
| Molecular Weight | Predicted: 11 kD; Observed: 12 kD |
| Form/Buffer | Liquid in 0.42% Potassium phosphate, 0.87% Sodium chloride, pH 7.3, 30% glycerol, and 0.01% sodium azide. |
| Alternative Names | FKBP1; FKBP12; Peptidyl-prolyl cis-trans isomerase FKBP1A; PPIase FKBP1A; 12 kDa FK506-binding protein; 12 kDa FKBP; FKBP-12; Calstabin-1; FK506-binding protein 1A; FKBP-1A; Immunophilin FKBP12; Rotamase |
| Gene Symbol | FKBP1A |
| Entrez Gene | 2280(Human); 14225(Mouse); 25639(Rat) |
| SwissProt | P62942(Human); P26883(Mouse); Q62658(Rat) |

*AREX continuously optimizes our products. Webpage content may not reflect the latest updates. For inquiries, please contact info@arexbio.com or your local distributor.

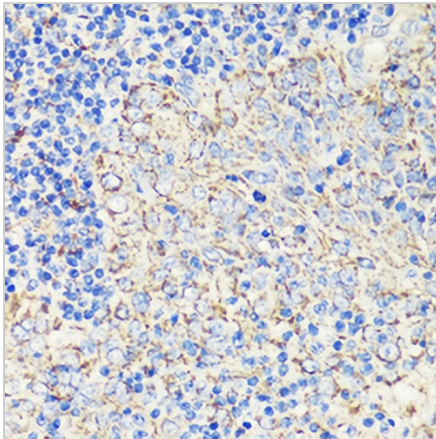
*Clone Number, Reactivity, Source/Host and Clonality can be found in the product name and Key Features section above.

DATASHEET**FKBP12 Rabbit Polyclonal Antibody**

CAT. NO. APA12619

DATA

Western blot analysis of FKBP12 expression in Jurkat (A), SHSY5Y (B), mouse brain (C) whole cell lysates. (Predicted band size: 11 kD; Observed band size: 12 kD)



Immunohistochemical analysis of FKBP12 staining in human tonsil formalin fixed paraffin embedded tissue section. The section was pre-treated using heat mediated antigen retrieval with sodium citrate buffer (pH 6.0). The section was then incubated with the antibody at room temperature and detected using an HRP conjugated compact polymer system. DAB was used as the chromogen. The section was then counterstained with haematoxylin and mounted with DPX.

STORAGE

Store at 4°C short term. For long term storage, store at -20°C, avoiding freeze/thaw cycles.

NOTE

For Research Use Only. Not for diagnostic, therapeutics, prophylactic or in vivo use.