

**DATASHEET**

**RPGR Rabbit Polyclonal Antibody**

CAT. NO. APA12626

**KEY FEATURES**

Target	RPGR	Source / Host	Rabbit
Reactivity	Human, Mouse	Clonality	Polyclonal
Applications	WB	Conjugation	Unconjugated
Form / Buffer	Liquid in 0.42% Potassium phosphate, 0.87% Sodium chloride, pH 7.3, 30% glycerol, and 0.01% sodium azide.		Storage at -20°C

**BACKGROUND**

Acts as a guanine-nucleotide releasing factor (GEF) for RAB8A and RAB37 by promoting the conversion of inactive RAB-GDP to the active form RAB-GTP for RAB8A and RAB37 by promoting the conversion of inactive RAB-GDP to the active form RAB-GTP . GEF activity towards RAB8A may facilitate ciliary trafficking by modulating ciliary intracellular localization of RAB8A . GEF activity towards RAB37 maintains autophagic homeostasis and retinal function . Involved in photoreceptor integrity . May control cilia formation by regulating actin stress filaments and cell contractility. May be involved in microtubule organization and regulation of transport in primary cilia . May play a critical role in spermatogenesis and in intraflagellar transport processes .

**APPLICATION**

To ensure optimal assay performance, AREX recommends conducting reagent titration tailored to each testing system for optimal detection results.

WB	1:500 - 1:2000
----	----------------

\*Results are sample-specific. Please refer to your local assay conditions and test parameters for reference.

**PRODUCT OVERVIEW**

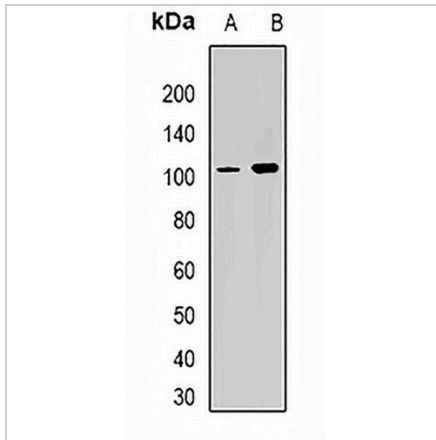
Description	Rabbit polyclonal antibody to RPGR
Specificity	Recognizes endogenous levels of RPGR protein.
Antibody Type	Primary antibody
Immunogen	Recombinant fusion protein of human RPGR
Purification	The antibody was purified by immunogen affinity chromatography.
Molecular Weight	Predicted: 52; Observed: 113 kD
Form/Buffer	Liquid in 0.42% Potassium phosphate, 0.87% Sodium chloride, pH 7.3, 30% glycerol, and 0.01% sodium azide.
Alternative Names	RP3; XLRP3; X-linked retinitis pigmentosa GTPase regulator
Gene Symbol	RPGR
Entrez Gene	6103(Human); 19893(Mouse)
SwissProt	Q92834(Human); Q9R0X5(Mouse)

\*AREX continuously optimizes our products. Webpage content may not reflect the latest updates. For inquiries, please contact [info@arexbio.com](mailto:info@arexbio.com) or your local distributor.

\*Clone Number, Reactivity, Source/Host and Clonality can be found in the product name and Key Features section above.

**DATASHEET****RPGR Rabbit Polyclonal Antibody**

CAT. NO. APA12626

**DATA**

Western blot analysis of RPGR expression in Y79 (A), mouse heart (B) whole cell lysates.  
(Predicted band size: 52; 70; 83; 90; 113; 127 kD; Observed band size: 113 kD)

**STORAGE**

Store at 4°C short term. For long term storage, store at -20°C, avoiding freeze/thaw cycles.

**NOTE**

For Research Use Only. Not for diagnostic, therapeutics, prophylactic or in vivo use.