

**DATASHEET**

**CES1 Rabbit Polyclonal Antibody**

CAT. NO. APA12629

**KEY FEATURES**

Target	CES1	Source / Host	Rabbit
Reactivity	Human, Mouse, Rat	Clonality	Polyclonal
Applications	WB	Conjugation	Unconjugated
Form / Buffer	Liquid in 0.42% Potassium phosphate, 0.87% Sodium chloride, pH 7.3, 30% glycerol, and 0.01% sodium azide.		Storage at-20°C

**BACKGROUND**

Involved in the detoxification of xenobiotics and in the activation of ester and amide prodrugs . Hydrolyzes aromatic and aliphatic esters, but has no catalytic activity toward amides or a fatty acyl-CoA ester . Hydrolyzes the methyl ester group of cocaine to form benzoylecgonine . Catalyzes the transesterification of cocaine to form cocaethylene . Displays fatty acid ethyl ester synthase activity, catalyzing the ethyl esterification of oleic acid to ethyloleate . Converts monoacylglycerides to free fatty acids and glycerol. Hydrolyzes of 2-arachidonoylglycerol and prostaglandins . Hydrolyzes cellular cholesteryl esters to free cholesterols and promotes reverse cholesterol transport (RCT) by facilitating both the initial and final steps in the process .

**APPLICATION**

To ensure optimal assay performance, AREX recommends conducting reagent titration tailored to each testing system for optimal detection results.

WB	1:500 - 1:1000
----	----------------

\*Results are sample-specific. Please refer to your local assay conditions and test parameters for reference.

**PRODUCT OVERVIEW**

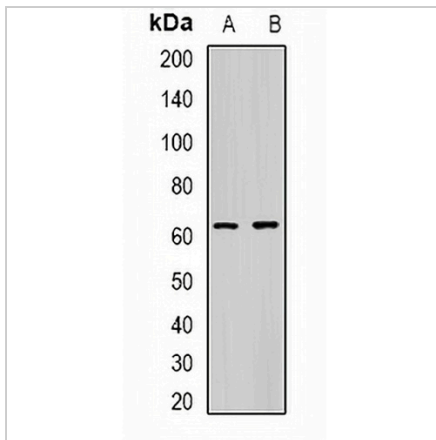
Description	Rabbit polyclonal antibody to CES1
Specificity	Recognizes endogenous levels of CES1 protein.
Antibody Type	Primary antibody
Immunogen	Recombinant fusion protein of human CES1
Purification	The antibody was purified by immunogen affinity chromatography.
Molecular Weight	Predicted: 62 kD; Observed: 63 kD
Form/Buffer	Liquid in 0.42% Potassium phosphate, 0.87% Sodium chloride, pH 7.3, 30% glycerol, and 0.01% sodium azide.
Alternative Names	CES2; SES1; Liver carboxylesterase 1; Acyl-coenzyme A:cholesterol acyltransferase; ACAT; Brain carboxylesterase hBr1; Carboxylesterase 1; CE-1; hCE-1; Cocaine carboxylesterase; Egasyn; HMSE; Methylumbelliferyl-acetate deacetylase 1; Monocyte/macrophage serine esterase; Retinyl ester hydrolase; REH; Serine esterase 1; Triacylglycerol hydrolase; TGH
Gene Symbol	CES1
Entrez Gene	1066(Human); 12623(Mouse)
SwissProt	P23141(Human); Q8VCC2(Mouse)

\*AREX continuously optimizes our products. Webpage content may not reflect the latest updates. For inquiries, please contact [info@arexbio.com](mailto:info@arexbio.com) or your local distributor.

\*Clone Number, Reactivity, Source/Host and Clonality can be found in the product name and Key Features section above.

**DATASHEET****CES1 Rabbit Polyclonal Antibody**

CAT. NO. APA12629

**DATA**

Western blot analysis of CES1 expression in A549 (A), mouse liver (B) whole cell lysates.  
(Predicted band size: 62 kD; Observed band size: 63 kD)

**STORAGE**

Store at 4°C short term. For long term storage, store at -20°C, avoiding freeze/thaw cycles.

**NOTE**

For Research Use Only. Not for diagnostic, therapeutics, prophylactic or in vivo use.