

DATASHEET

EPHX2 Rabbit Polyclonal Antibody

CAT. NO. APA12630

KEY FEATURES

Target	EPHX2	Source / Host	Rabbit
Reactivity	Human, Mouse, Rat	Clonality	Polyclonal
Applications	WB, IHC	Conjugation	Unconjugated
Form / Buffer	Liquid in 0.42% Potassium phosphate, 0.87% Sodium chloride, pH 7.3, 30% glycerol, and 0.01% sodium azide.		Storage at -20°C

BACKGROUND

Bifunctional enzyme . The C-terminal domain has epoxide hydrolase activity and acts on epoxides (alkene oxides, oxiranes) and arene oxides . Plays a role in xenobiotic metabolism by degrading potentially toxic epoxides . Also determines steady-state levels of physiological mediators .

APPLICATION

To ensure optimal assay performance, AREX recommends conducting reagent titration tailored to each testing system for optimal detection results.

WB	1:500 - 1:1000
IHC	1:50 - 1:100

*Results are sample-specific. Please refer to your local assay conditions and test parameters for reference.

PRODUCT OVERVIEW

Description	Rabbit polyclonal antibody to EPHX2
Specificity	Recognizes endogenous levels of EPHX2 protein.
Antibody Type	Primary antibody
Immunogen	Recombinant fusion protein of human EPHX2
Purification	The antibody was purified by immunogen affinity chromatography.
Molecular Weight	Predicted: 55; Observed: 63 kD
Form/Buffer	Liquid in 0.42% Potassium phosphate, 0.87% Sodium chloride, pH 7.3, 30% glycerol, and 0.01% sodium azide.
Alternative Names	Bifunctional epoxide hydrolase 2
Gene Symbol	EPHX2
Entrez Gene	2053(Human); 13850(Mouse); 65030(Rat)
SwissProt	P34913(Human); P34914(Mouse); P80299(Rat)

*AREX continuously optimizes our products. Webpage content may not reflect the latest updates. For inquiries, please contact info@arexbio.com or your local distributor.

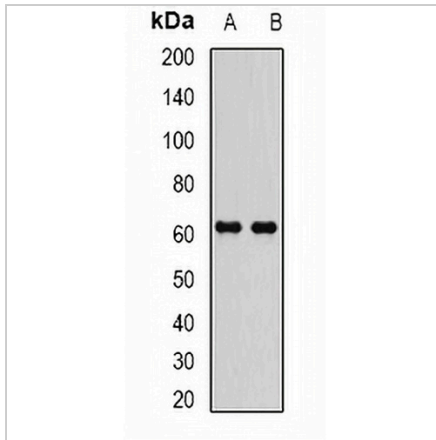
*Clone Number, Reactivity, Source/Host and Clonality can be found in the product name and Key Features section above.

DATASHEET

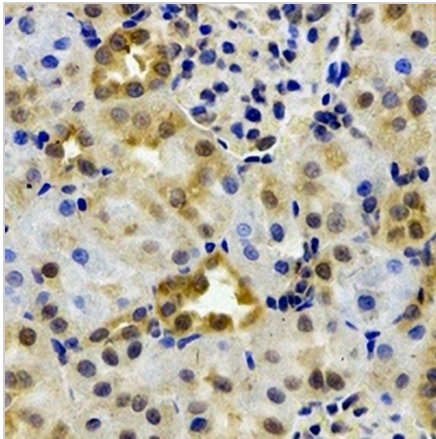
EPHX2 Rabbit Polyclonal Antibody

CAT. NO. APA12630

DATA



Western blot analysis of EPHX2 expression in MCF7 (A), Jurkat (B) whole cell lysates. (Predicted band size: 55; 57; 62 kD; Observed band size: 63 kD)



Immunohistochemical analysis of EPHX2 staining in rat kidney formalin fixed paraffin embedded tissue section. The section was pre-treated using heat mediated antigen retrieval with sodium citrate buffer (pH 6.0). The section was then incubated with the antibody at room temperature and detected using an HRP conjugated compact polymer system. DAB was used as the chromogen. The section was then counterstained with haematoxylin and mounted with DPX.

STORAGE

Store at 4°C short term. For long term storage, store at -20°C, avoiding freeze/thaw cycles.

NOTE

For Research Use Only. Not for diagnostic, therapeutics, prophylactic or in vivo use.