

DATASHEET

GPx-4 Rabbit Polyclonal Antibody

CAT. NO. APA12636

KEY FEATURES

Target	GPx-4	Source / Host	Rabbit
Reactivity	Human, Mouse, Rat	Clonality	Polyclonal
Applications	WB, IHC, IF/ICC	Conjugation	Unconjugated
Form / Buffer	Liquid in 0.42% Potassium phosphate, 0.87% Sodium chloride, pH 7.3, 30% glycerol, and 0.01% sodium azide.		Storage at -20°C

BACKGROUND

Essential antioxidant peroxidase that directly reduces phospholipid hydroperoxide even if they are incorporated in membranes and lipoproteins . Can also reduce cholesterol hydroperoxide and thymine hydroperoxide . Plays a key role in protecting cells from oxidative damage by preventing membrane lipid peroxidation . Required to prevent cells from ferroptosis, a non-apoptotic cell death resulting from an iron-dependent accumulation of lipid reactive oxygen species . The presence of selenocysteine (Sec) versus Cys at the active site is essential for life: it provides resistance to overoxidation and prevents cells against ferroptosis .

APPLICATION

To ensure optimal assay performance, AREX recommends conducting reagent titration tailored to each testing system for optimal detection results.

WB	1:500 - 1:2000
IHC	1:50 - 1:200
IF/ICC	1:10 - 1:100

*Results are sample-specific. Please refer to your local assay conditions and test parameters for reference.

PRODUCT OVERVIEW

Description	Rabbit polyclonal antibody to GPx-4
Specificity	Recognizes endogenous levels of GPx-4 protein.
Antibody Type	Primary antibody
Immunogen	Recombinant fusion protein of human GPx-4
Purification	The antibody was purified by immunogen affinity chromatography.
Molecular Weight	Predicted: 19; Observed: 22 kD
Form/Buffer	Liquid in 0.42% Potassium phosphate, 0.87% Sodium chloride, pH 7.3, 30% glycerol, and 0.01% sodium azide.
Alternative Names	Phospholipid hydroperoxide glutathione peroxidase mitochondrial; PHGPx; Glutathione peroxidase 4; GPx-4; GSHPx-4
Gene Symbol	GPX4
Entrez Gene	2879(Human)
SwissProt	P36969(Human)

*AREX continuously optimizes our products. Webpage content may not reflect the latest updates. For inquiries, please contact info@arexbio.com or your local distributor.

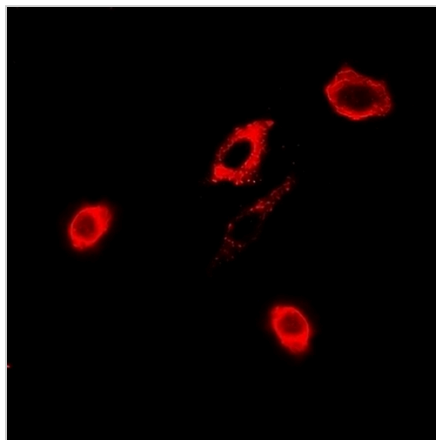
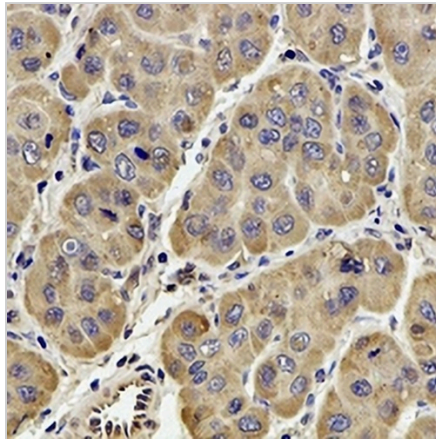
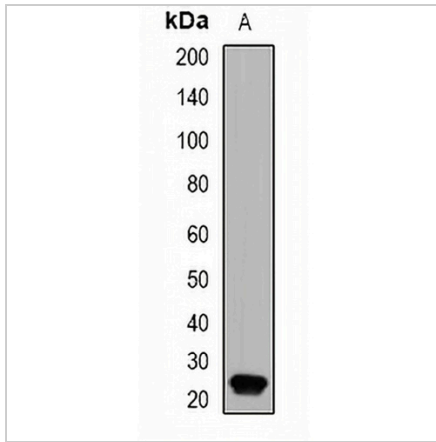
*Clone Number, Reactivity, Source/Host and Clonality can be found in the product name and Key Features section above.

DATASHEET

GPx-4 Rabbit Polyclonal Antibody

CAT. NO. APA12636

DATA



STORAGE

Store at 4°C short term. For long term storage, store at -20°C, avoiding freeze/thaw cycles.

NOTE

For Research Use Only. Not for diagnostic, therapeutics, prophylactic or in vivo use.