

DATASHEET

RCAS1 Rabbit Polyclonal Antibody

CAT. NO. APA12637

KEY FEATURES

Target	RCAS1	Source / Host	Rabbit
Reactivity	Human, Mouse, Rat	Clonality	Polyclonal
Applications	WB	Conjugation	Unconjugated
Form / Buffer	Liquid in 0.42% Potassium phosphate, 0.87% Sodium chloride, pH 7.3, 30% glycerol, and 0.01% sodium azide.		Storage at -20°C

BACKGROUND

May participate in suppression of cell proliferation and induces apoptotic cell death through activation of interleukin-1-beta converting enzyme (ICE)-like proteases.

APPLICATION

To ensure optimal assay performance, AREX recommends conducting reagent titration tailored to each testing system for optimal detection results.

WB	1:500 - 1:1000
----	----------------

*Results are sample-specific. Please refer to your local assay conditions and test parameters for reference.

PRODUCT OVERVIEW

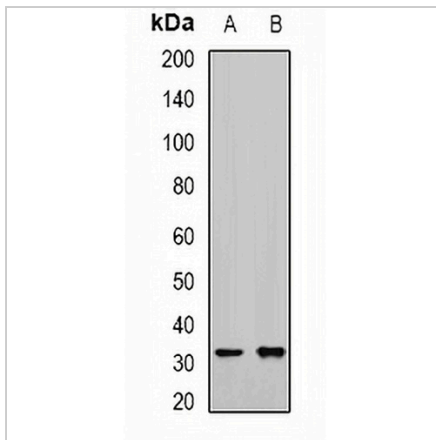
Description	Rabbit polyclonal antibody to RCAS1
Specificity	Recognizes endogenous levels of RCAS1 protein.
Antibody Type	Primary antibody
Immunogen	Recombinant fusion protein of human RCAS1
Purification	The antibody was purified by immunogen affinity chromatography.
Molecular Weight	Predicted: 24; Observed: 29 kD
Form/Buffer	Liquid in 0.42% Potassium phosphate, 0.87% Sodium chloride, pH 7.3, 30% glycerol, and 0.01% sodium azide.
Alternative Names	RCAS1; Receptor-binding cancer antigen expressed on SiSo cells; Cancer-associated surface antigen RCAS1; Estrogen receptor-binding fragment-associated gene 9 protein
Gene Symbol	EBAG9
Entrez Gene	9166(Human); 55960(Mouse); 299864(Rat)
SwissProt	O00559(Human); Q9D0V7(Mouse); Q5PQP2(Rat)

*AREX continuously optimizes our products. Webpage content may not reflect the latest updates. For inquiries, please contact info@arexbio.com or your local distributor.

*Clone Number, Reactivity, Source/Host and Clonality can be found in the product name and Key Features section above.

DATASHEET**RCAS1 Rabbit Polyclonal Antibody**

CAT. NO. APA12637

DATA

Western blot analysis of RCAS1 expression in mouse kidney (A), mouse liver (B) whole cell lysates. (Predicted band size: 24; 29 kD; Observed band size: 29 kD)

STORAGE

Store at 4°C short term. For long term storage, store at -20°C, avoiding freeze/thaw cycles.

NOTE

For Research Use Only. Not for diagnostic, therapeutics, prophylactic or in vivo use.