

DATASHEET

GLUR6 Rabbit Polyclonal Antibody

CAT. NO. APA12639

KEY FEATURES

Target	GLUR6	Source / Host	Rabbit
Reactivity	Human, Mouse, Rat	Clonality	Polyclonal
Applications	WB	Conjugation	Unconjugated
Form / Buffer	Liquid in 0.42% Potassium phosphate, 0.87% Sodium chloride, pH 7.3, 30% glycerol, and 0.01% sodium azide.		Storage at -20°C

BACKGROUND

Ionotropic glutamate receptor that functions as a cation-permeable ligand-gated ion channel, gated by L-glutamate and the glutamatergic agonist kainic acid . L-glutamate acts as an excitatory neurotransmitter at many synapses in the central nervous system . Binding of the excitatory neurotransmitter L-glutamate induces a conformational change leading to the opening of the cation channel, converting the chemical signal to an electrical impulse . The receptor then desensitizes rapidly and enters a transient inactive state, characterized by the presence of bound agonist . Modulates cell surface expression of NETO2 . In association with GRIK3, involved in presynaptic facilitation of glutamate release at hippocampal mossy fiber synapses .

APPLICATION

To ensure optimal assay performance, AREX recommends conducting reagent titration tailored to each testing system for optimal detection results.

WB	1:500 - 1:1000
----	----------------

*Results are sample-specific. Please refer to your local assay conditions and test parameters for reference.

PRODUCT OVERVIEW

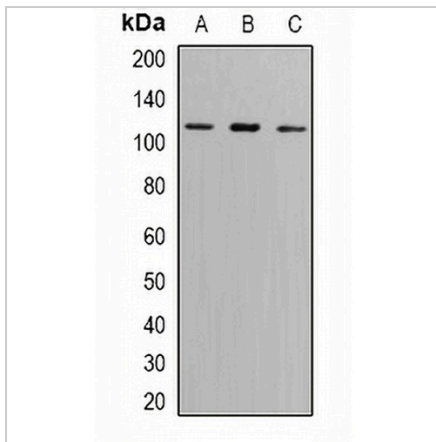
Description	Rabbit polyclonal antibody to GLUR6
Specificity	Recognizes endogenous levels of GLUR6 protein.
Antibody Type	Primary antibody
Immunogen	Recombinant fusion protein of human GLUR6
Purification	The antibody was purified by immunogen affinity chromatography.
Molecular Weight	Predicted: 66; Observed: 115 kD
Form/Buffer	Liquid in 0.42% Potassium phosphate, 0.87% Sodium chloride, pH 7.3, 30% glycerol, and 0.01% sodium azide.
Alternative Names	GLUR6; Glutamate receptor ionotropic, kainate 2; GluK2; Excitatory amino acid receptor 4; EAA4; Glutamate receptor 6; GluR-6; GluR6
Gene Symbol	GRIK2
Entrez Gene	2898(Human); 14806(Mouse); 54257(Rat)
SwissProt	Q13002(Human); P39087(Mouse); P42260(Rat)

*AREX continuously optimizes our products. Webpage content may not reflect the latest updates. For inquiries, please contact info@arexbio.com or your local distributor.

*Clone Number, Reactivity, Source/Host and Clonality can be found in the product name and Key Features section above.

DATASHEET**GLUR6 Rabbit Polyclonal Antibody**

CAT. NO. APA12639

DATA

Western blot analysis of GLUR6 expression in SW620 (A), A549 (B), mouse brain (C) whole cell lysates. (Predicted band size: 66; 77; 93; 97; 100; 102 kD; Observed band size: 115 kD)

STORAGE

Store at 4°C short term. For long term storage, store at -20°C, avoiding freeze/thaw cycles.

NOTE

For Research Use Only. Not for diagnostic, therapeutics, prophylactic or in vivo use.