

DATASHEET

TMPRSS2 Rabbit Polyclonal Antibody

CAT. NO. APA12643

KEY FEATURES

Target	TMPRSS2	Source / Host	Rabbit
Reactivity	Human, Mouse, Rat	Clonality	Polyclonal
Applications	WB	Conjugation	Unconjugated
Form / Buffer	Liquid in 0.42% Potassium phosphate, 0.87% Sodium chloride, pH 7.3, 30% glycerol, and 0.01% sodium azide.		Storage at -20°C

BACKGROUND

Plasma membrane-anchored serine protease that cleaves at arginine residues . Participates in proteolytic cascades of relevance for the normal physiologic function of the prostate . Androgen-induced TMPRSS2 activates several substrates that include pro-hepatocyte growth factor/HGF, the protease activated receptor-2/F2RL1 or matriptase/ST14 leading to extracellular matrix disruption and metastasis of prostate cancer cells . In addition, activates trigeminal neurons and contribute to both spontaneous pain and mechanical allodynia .

APPLICATION

To ensure optimal assay performance, AREX recommends conducting reagent titration tailored to each testing system for optimal detection results.

WB	1:500 - 1:1000
----	----------------

*Results are sample-specific. Please refer to your local assay conditions and test parameters for reference.

PRODUCT OVERVIEW

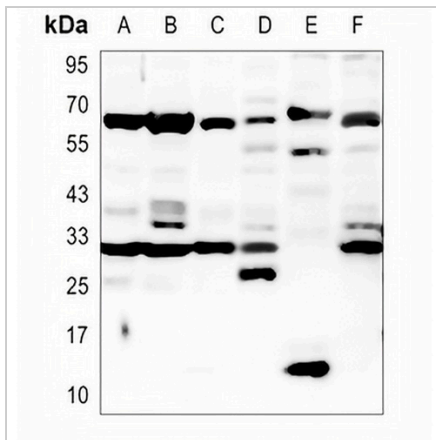
Description	Rabbit polyclonal antibody to TMPRSS2
Specificity	Recognizes endogenous levels of TMPRSS2 protein.
Antibody Type	Primary antibody
Immunogen	Recombinant fusion protein of human TMPRSS2
Purification	The antibody was purified by immunogen affinity chromatography.
Molecular Weight	Predicted: 53 kD; Observed: 65; 54; 32 kD
Form/Buffer	Liquid in 0.42% Potassium phosphate, 0.87% Sodium chloride, pH 7.3, 30% glycerol, and 0.01% sodium azide.
Alternative Names	PRSS10; Transmembrane protease serine 2; Serine protease 10
Gene Symbol	TMPRSS2
Entrez Gene	7113(Human); 50528(Mouse)
SwissProt	O15393(Human); Q9JIQ8(Mouse)

*AREX continuously optimizes our products. Webpage content may not reflect the latest updates. For inquiries, please contact info@arexbio.com or your local distributor.

*Clone Number, Reactivity, Source/Host and Clonality can be found in the product name and Key Features section above.

DATASHEET**TMPRSS2 Rabbit Polyclonal Antibody**

CAT. NO. APA12643

DATA

Western blot analysis of TMPRSS2 expression in HEK293T (A), K562 (B), MCF7 (C), mouse spleen (D), rat kidney (E), rat spleen (F) whole cell lysates. (Predicted band size: 53 kD; Observed band size: 65; 54; 32 kD)

STORAGE

Store at 4°C short term. For long term storage, store at -20°C, avoiding freeze/thaw cycles.

NOTE

For Research Use Only. Not for diagnostic, therapeutics, prophylactic or in vivo use.