

DATASHEET

BAG6 Rabbit Polyclonal Antibody

CAT. NO. APA12649

KEY FEATURES

Target	BAG6	Source / Host	Rabbit
Reactivity	Human, Mouse, Rat	Clonality	Polyclonal
Applications	WB	Conjugation	Unconjugated
Form / Buffer	Liquid in 0.42% Potassium phosphate, 0.87% Sodium chloride, pH 7.3, 30% glycerol, and 0.01% sodium azide.		Storage at -20°C

BACKGROUND

ATP-independent molecular chaperone preventing the aggregation of misfolded and hydrophobic patches-containing proteins. Functions as part of a cytosolic protein quality control complex, the BAG6/BAT3 complex, which maintains these client proteins in a soluble state and participates in their proper delivery to the endoplasmic reticulum or alternatively can promote their sorting to the proteasome where they undergo degradation. The BAG6/BAT3 complex is involved in the post-translational delivery of tail-anchored/type II transmembrane proteins to the endoplasmic reticulum membrane. Recruited to ribosomes, it interacts with the transmembrane region of newly synthesized tail-anchored proteins and together with SGTA and ASNA1 mediates their delivery to the endoplasmic reticulum.

APPLICATION

To ensure optimal assay performance, AREX recommends conducting reagent titration tailored to each testing system for optimal detection results.

WB	1:500 - 1:2000
----	----------------

*Results are sample-specific. Please refer to your local assay conditions and test parameters for reference.

PRODUCT OVERVIEW

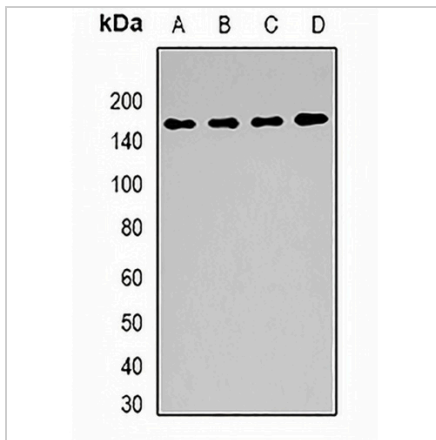
Description	Rabbit polyclonal antibody to BAG6
Specificity	Recognizes endogenous levels of BAG6 protein.
Antibody Type	Primary antibody
Immunogen	Recombinant fusion protein of human BAG6
Purification	The antibody was purified by immunogen affinity chromatography.
Molecular Weight	Predicted: 96; Observed: 160 kD
Form/Buffer	Liquid in 0.42% Potassium phosphate, 0.87% Sodium chloride, pH 7.3, 30% glycerol, and 0.01% sodium azide.
Alternative Names	BAT3; G3; Large proline-rich protein BAG6; BAG family molecular chaperone regulator 6; BCL2-associated athanogene 6; BAG-6; BAG6; HLA-B-associated transcript 3; Protein G3; Protein Scythe
Gene Symbol	BAG6
Entrez Gene	7917(Human); 224727(Mouse); 94342(Rat)
SwissProt	P46379(Human); Q9Z1R2(Mouse); Q6MG49(Rat)

*AREX continuously optimizes our products. Webpage content may not reflect the latest updates. For inquiries, please contact info@arexbio.com or your local distributor.

*Clone Number, Reactivity, Source/Host and Clonality can be found in the product name and Key Features section above.

DATASHEET**BAG6 Rabbit Polyclonal Antibody**

CAT. NO. APA12649

DATA

Western blot analysis of BAG6 expression in Hela (A), mouse kidney (B), mouse testis (C), rat testis (D) whole cell lysates. (Predicted band size: 96; 113; 118; 119; 122 kD; Observed band size: 160 kD)

STORAGE

Store at 4°C short term. For long term storage, store at -20°C, avoiding freeze/thaw cycles.

NOTE

For Research Use Only. Not for diagnostic, therapeutics, prophylactic or in vivo use.