

DATASHEET

Tryptase alpha/beta Rabbit Polyclonal Antibody

CAT. NO. APA12650

KEY FEATURES

Target	Tryptase alpha/beta	Source / Host	Rabbit
Reactivity	Human, Mouse, Rat	Clonality	Polyclonal
Applications	WB	Conjugation	Unconjugated
Form / Buffer	Liquid in 0.42% Potassium phosphate, 0.87% Sodium chloride, pH 7.3, 30% glycerol, and 0.01% sodium azide.		Storage at-20°C

BACKGROUND

Tryptase is the major neutral protease present in mast cells and is secreted upon the coupled activation-degranulation response of this cell type. May play a role in innate immunity. Isoform 2 cleaves large substrates, such as fibronectin, more efficiently than isoform 1, but seems less efficient toward small substrates .

APPLICATION

To ensure optimal assay performance, AREX recommends conducting reagent titration tailored to each testing system for optimal detection results.

WB	1:500 - 1:1000
----	----------------

*Results are sample-specific. Please refer to your local assay conditions and test parameters for reference.

PRODUCT OVERVIEW

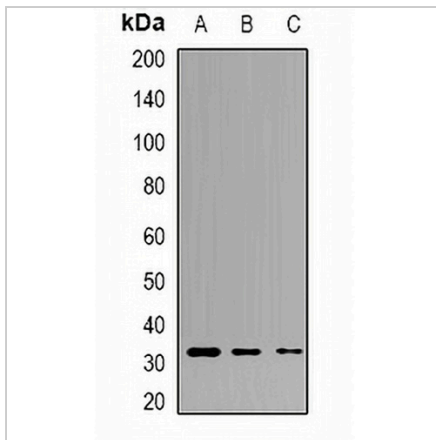
Description	Rabbit polyclonal antibody to Tryptase alpha/beta
Specificity	Recognizes endogenous levels of Tryptase alpha/beta protein.
Antibody Type	Primary antibody
Immunogen	Recombinant fusion protein of human Tryptase alpha/beta
Purification	The antibody was purified by immunogen affinity chromatography.
Molecular Weight	Predicted: 29; Observed: 30 kD
Form/Buffer	Liquid in 0.42% Potassium phosphate, 0.87% Sodium chloride, pH 7.3, 30% glycerol, and 0.01% sodium azide.
Alternative Names	TPS1; TPS2; TPSB1; Tryptase alpha/beta-1; Tryptase-1; Tryptase I; Tryptase alpha-1
Gene Symbol	TPSAB1
Entrez Gene	7177(Human); 100503895(Mouse); 54271(Rat)
SwissProt	Q15661(Human); Q02844(Mouse); P27435(Rat)

*AREX continuously optimizes our products. Webpage content may not reflect the latest updates. For inquiries, please contact info@arexbio.com or your local distributor.

*Clone Number, Reactivity, Source/Host and Clonality can be found in the product name and Key Features section above.

DATASHEET**Tryptase alpha/beta Rabbit Polyclonal Antibody**

CAT. NO. APA12650

DATA

Western blot analysis of Tryptase alpha/beta expression in HepG2 (A), mouse brain (B), mouse liver (C) whole cell lysates. (Predicted band size: 29; 30 kD; Observed band size: 30 kD)

STORAGE

Store at 4°C short term. For long term storage, store at -20°C, avoiding freeze/thaw cycles.

NOTE

For Research Use Only. Not for diagnostic, therapeutics, prophylactic or in vivo use.