

DATASHEET

SCCPDH Rabbit Polyclonal Antibody

CAT. NO. APA12660

KEY FEATURES

Target	SCCPDH	Source / Host	Rabbit
Reactivity	Human, Mouse, Rat	Clonality	Polyclonal
Applications	WB	Conjugation	Unconjugated
Form / Buffer	Liquid in 0.42% Potassium phosphate, 0.87% Sodium chloride, pH 7.3, 30% glycerol, and 0.01% sodium azide.		Storage at -20°C

BACKGROUND

Saccharopine dehydrogenase-like oxidoreductase (SCCPDH). Belongs to the saccharopine dehydrogenase family

APPLICATION

To ensure optimal assay performance, AREX recommends conducting reagent titration tailored to each testing system for optimal detection results.

WB	1:500 - 1:2000
----	----------------

*Results are sample-specific. Please refer to your local assay conditions and test parameters for reference.

PRODUCT OVERVIEW

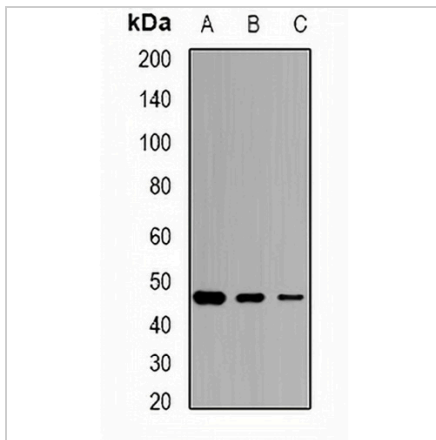
Description	Rabbit polyclonal antibody to SCCPDH
Specificity	Recognizes endogenous levels of SCCPDH protein.
Antibody Type	Primary antibody
Immunogen	Recombinant fusion protein of human SCCPDH
Purification	The antibody was purified by immunogen affinity chromatography.
Molecular Weight	Predicted: 47 kD; Observed: 45 kD
Form/Buffer	Liquid in 0.42% Potassium phosphate, 0.87% Sodium chloride, pH 7.3, 30% glycerol, and 0.01% sodium azide.
Alternative Names	Saccharopine dehydrogenase-like oxidoreductase
Gene Symbol	SCCPDH
Entrez Gene	51097(Human); 109232(Mouse); 305021(Rat)
SwissProt	Q8NBX0(Human); Q8R127(Mouse); Q6AY30(Rat)

*AREX continuously optimizes our products. Webpage content may not reflect the latest updates. For inquiries, please contact info@arexbio.com or your local distributor.

*Clone Number, Reactivity, Source/Host and Clonality can be found in the product name and Key Features section above.

DATASHEET**SCCPDH Rabbit Polyclonal Antibody**

CAT. NO. APA12660

DATA

Western blot analysis of SCCPDH expression in THP1 (A), PC3 (B), mouse heart (C) whole cell lysates. (Predicted band size: 47 kD; Observed band size: 45 kD)

STORAGE

Store at 4°C short term. For long term storage, store at -20°C, avoiding freeze/thaw cycles.

NOTE

For Research Use Only. Not for diagnostic, therapeutics, prophylactic or in vivo use.