

**DATASHEET**

**Eppin Rabbit Polyclonal Antibody**

CAT. NO. APA12661

**KEY FEATURES**

|               |   |               |                     |
|---------------|---|---------------|---------------------|
| Target        | Eppin   | Source / Host | Rabbit              |
| Reactivity    | Human, Mouse, Rat   | Clonality     | Polyclonal          |
| Applications  | WB  | Conjugation   | Unconjugated        |
| Form / Buffer | Liquid in 0.42% Potassium phosphate, 0.87% Sodium chloride, pH 7.3, 30% glycerol, and 0.01% sodium azide. |               | Storage<br>at -20°C |

**BACKGROUND**

Serine protease inhibitor that plays an essential role in male reproduction and fertility. Modulates the hydrolysis of SEMG1 by KLK3/PSA (a serine protease), provides antimicrobial protection for spermatozoa in the ejaculate coagulum, and binds SEMG1 thereby inhibiting sperm motility.

**APPLICATION**

To ensure optimal assay performance, AREX recommends conducting reagent titration tailored to each testing system for optimal detection results.

|    |                |
|----|----------------|
| WB | 1:500 - 1:1000 |
|----|----------------|

\*Results are sample-specific. Please refer to your local assay conditions and test parameters for reference.

**PRODUCT OVERVIEW**

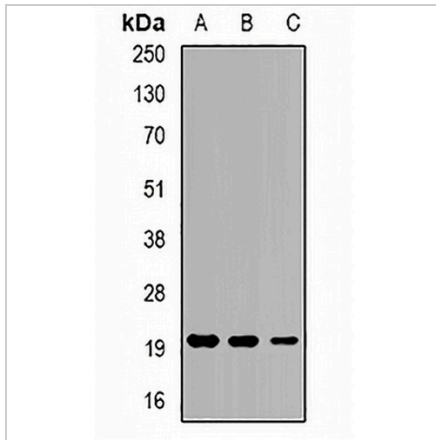
|                   |   |
|-------------------|---|
| Description       | Rabbit polyclonal antibody to Eppin   |
| Specificity       | Recognizes endogenous levels of Eppin protein.  |
| Antibody Type     | Primary antibody  |
| Immunogen         | Recombinant fusion protein of human Eppin   |
| Purification      | The antibody was purified by immunogen affinity chromatography.   |
| Molecular Weight  | Predicted: 13; Observed: 20 kD  |
| Form/Buffer       | Liquid in 0.42% Potassium phosphate, 0.87% Sodium chloride, pH 7.3, 30% glycerol, and 0.01% sodium azide.   |
| Alternative Names | SPINLW1; WAP7; WFDC7; Eppin; Cancer/testis antigen 71; CT71; Epididymal protease inhibitor; Protease inhibitor WAP7; Serine protease inhibitor-like with Kunitz and WAP domains 1; WAP four-disulfide core domain protein 7 |
| Gene Symbol       | EPPIN   |
| Entrez Gene       | 100526773; 57119(Human); 75526(Mouse)   |
| SwissProt         | O95925(Human); Q9DA01(Mouse)  |

\*AREX continuously optimizes our products. Webpage content may not reflect the latest updates. For inquiries, please contact [info@arexbio.com](mailto:info@arexbio.com) or your local distributor.

\*Clone Number, Reactivity, Source/Host and Clonality can be found in the product name and Key Features section above.

**DATASHEET****Eppin Rabbit Polyclonal Antibody**

CAT. NO. APA12661

**DATA**

Western blot analysis of Eppin expression in THP1 (A), mouse liver (B), mouse testis (C) whole cell lysates. (Predicted band size: 13; 15; 20 kD; Observed band size: 20 kD)

**STORAGE**

Store at 4°C short term. For long term storage, store at -20°C, avoiding freeze/thaw cycles.

**NOTE**

For Research Use Only. Not for diagnostic, therapeutics, prophylactic or in vivo use.