

DATASHEET

PPP2R2A Rabbit Polyclonal Antibody

CAT. NO. APA12666

KEY FEATURES

Target	PPP2R2A	Source / Host	Rabbit
Reactivity	Human, Mouse, Rat	Clonality	Polyclonal
Applications	WB, IHC	Conjugation	Unconjugated
Form / Buffer	Liquid in 0.42% Potassium phosphate, 0.87% Sodium chloride, pH 7.3, 30% glycerol, and 0.01% sodium azide.		Storage at -20°C

BACKGROUND

Substrate-recognition subunit of protein phosphatase 2A (PP2A) that plays a key role in cell cycle by controlling mitosis entry and exit that plays a key role in cell cycle by controlling mitosis entry and exit. Involved in chromosome clustering during late mitosis by mediating dephosphorylation of MKI67. Essential for serine/threonine-protein phosphatase 2A-mediated dephosphorylation of WEE1, preventing its ubiquitin-mediated proteolysis, increasing WEE1 protein levels, and promoting the G2/M checkpoint.

APPLICATION

To ensure optimal assay performance, AREX recommends conducting reagent titration tailored to each testing system for optimal detection results.

WB	1:500 - 1:1000
IHC	1:50 - 1:200

*Results are sample-specific. Please refer to your local assay conditions and test parameters for reference.

PRODUCT OVERVIEW

Description	Rabbit polyclonal antibody to PPP2R2A
Specificity	Recognizes endogenous levels of PPP2R2A protein.
Antibody Type	Primary antibody
Immunogen	Recombinant fusion protein of human PPP2R2A
Purification	The antibody was purified by immunogen affinity chromatography.
Molecular Weight	Predicted: 51 kD; Observed: 52 kD
Form/Buffer	Liquid in 0.42% Potassium phosphate, 0.87% Sodium chloride, pH 7.3, 30% glycerol, and 0.01% sodium azide.
Alternative Names	Serine/threonine-protein phosphatase 2A 55 kDa regulatory subunit B alpha isoform; PP2A subunit B isoform B55-alpha; PP2A subunit B isoform PR55-alpha; PP2A subunit B isoform R2-alpha; PP2A subunit B isoform alpha
Gene Symbol	PPP2R2A
Entrez Gene	5520(Human); 71978(Mouse); 117104(Rat)
SwissProt	P63151(Human); Q6P1F6(Mouse); P36876(Rat)

*AREX continuously optimizes our products. Webpage content may not reflect the latest updates. For inquiries, please contact info@arexbio.com or your local distributor.

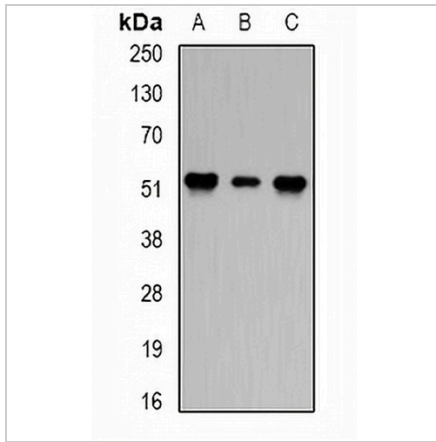
*Clone Number, Reactivity, Source/Host and Clonality can be found in the product name and Key Features section above.

DATASHEET

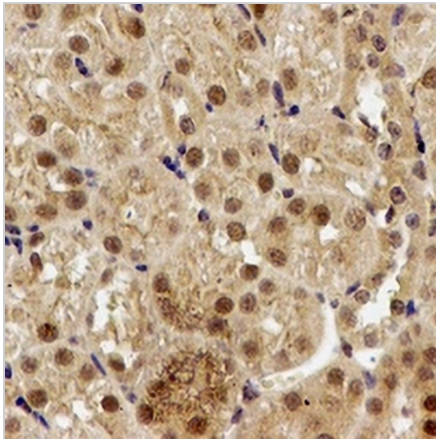
PPP2R2A Rabbit Polyclonal Antibody

CAT. NO. APA12666

DATA



Western blot analysis of PPP2R2A expression in Hela (A), Jurkat (B), mouse brain (C) whole cell lysates. (Predicted band size: 51 kD; Observed band size: 52 kD)



Immunohistochemical analysis of PPP2R2A staining in rat kidney formalin fixed paraffin embedded tissue section. The section was pre-treated using heat mediated antigen retrieval with sodium citrate buffer (pH 6.0). The section was then incubated with the antibody at room temperature and detected using an HRP conjugated compact polymer system. DAB was used as the chromogen. The section was then counterstained with haematoxylin and mounted with DPX.

STORAGE

Store at 4°C short term. For long term storage, store at -20°C, avoiding freeze/thaw cycles.

NOTE

For Research Use Only. Not for diagnostic, therapeutics, prophylactic or in vivo use.