

DATASHEET

LTA4H Rabbit Polyclonal Antibody

CAT. NO. APA12674

KEY FEATURES

Target	LTA4H	Source / Host	Rabbit
Reactivity	Human, Mouse, Rat	Clonality	Polyclonal
Applications	WB	Conjugation	Unconjugated
Form / Buffer	Liquid in 0.42% Potassium phosphate, 0.87% Sodium chloride, pH 7.3, 30% glycerol, and 0.01% sodium azide.		Storage at -20°C

BACKGROUND

Bifunctional zinc metalloenzyme that comprises both epoxide hydrolase (EH) and aminopeptidase activities. Acts as an epoxide hydrolase to catalyze the conversion of LTA4 to the pro-inflammatory mediator leukotriene B4 (LTB4) and aminopeptidase activities. Acts as an epoxide hydrolase to catalyze the conversion of LTA4 to the pro-inflammatory mediator leukotriene B4 (LTB4) . Can utilize LTA5 less effectively as a substrate than LTA4, and produce LTB5 . Also has aminopeptidase activity, with high affinity for N-terminal arginines of various synthetic tripeptides .

APPLICATION

To ensure optimal assay performance, AREX recommends conducting reagent titration tailored to each testing system for optimal detection results.

WB	1:500 - 1:1000
----	----------------

*Results are sample-specific. Please refer to your local assay conditions and test parameters for reference.

PRODUCT OVERVIEW

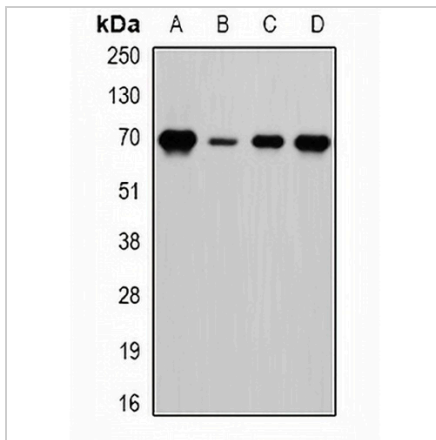
Description	Rabbit polyclonal antibody to LTA4H
Specificity	Recognizes endogenous levels of LTA4H protein.
Antibody Type	Primary antibody
Immunogen	Recombinant fusion protein of human LTA4H
Purification	The antibody was purified by immunogen affinity chromatography.
Molecular Weight	Predicted: 57; Observed: 69 kD
Form/Buffer	Liquid in 0.42% Potassium phosphate, 0.87% Sodium chloride, pH 7.3, 30% glycerol, and 0.01% sodium azide.
Alternative Names	LTA4; Leukotriene A-4 hydrolase; LTA-4 hydrolase; Leukotriene A(4) hydrolase
Gene Symbol	LTA4H
Entrez Gene	4048(Human); 16993(Mouse)
SwissProt	P09960(Human); P24527(Mouse); P30349(Rat)

*AREX continuously optimizes our products. Webpage content may not reflect the latest updates. For inquiries, please contact info@arexbio.com or your local distributor.

*Clone Number, Reactivity, Source/Host and Clonality can be found in the product name and Key Features section above.

DATASHEET**LTA4H Rabbit Polyclonal Antibody**

CAT. NO. APA12674

DATA

Western blot analysis of LTA4H expression in HepG2 (A), Romas (B), mouse spleen (C), mouse brain (D) whole cell lysates. (Predicted band size: 57; 59; 66; 69 kD; Observed band size: 69 kD)

STORAGE

Store at 4°C short term. For long term storage, store at -20°C, avoiding freeze/thaw cycles.

NOTE

For Research Use Only. Not for diagnostic, therapeutics, prophylactic or in vivo use.