

DATASHEET

TIM Rabbit Polyclonal Antibody

CAT. NO. APA12682

KEY FEATURES

| | | | |
|---------------|---|---------------|--------------------|
| Target | TIM | Source / Host | Rabbit |
| Reactivity | Human, Mouse, Rat | Clonality | Polyclonal |
| Applications | WB, IHC, IF/ICC | Conjugation | Unconjugated |
| Form / Buffer | Liquid in 0.42% Potassium phosphate, 0.87% Sodium chloride, pH 7.3, 30% glycerol, and 0.01% sodium azide. | | Storage at-20°C |

BACKGROUND

Triosephosphate isomerase is an extremely efficient metabolic enzyme that catalyzes the interconversion between dihydroxyacetone phosphate (DHAP) and D-glyceraldehyde-3-phosphate (G3P) in glycolysis and gluconeogenesis.

APPLICATION

To ensure optimal assay performance, AREX recommends conducting reagent titration tailored to each testing system for optimal detection results.

| | |
|--------|----------------|
| WB | 1:500 - 1:2000 |
| IHC | 1:50 - 1:200 |
| IF/ICC | 1:50 - 1:200 |

*Results are sample-specific. Please refer to your local assay conditions and test parameters for reference.

PRODUCT OVERVIEW

| | |
|-------------------|---|
| Description | Rabbit polyclonal antibody to TIM |
| Specificity | Recognizes endogenous levels of TIM protein. |
| Antibody Type | Primary antibody |
| Immunogen | Recombinant fusion protein of human TIM |
| Purification | The antibody was purified by immunogen affinity chromatography. |
| Molecular Weight | Predicted: 17; Observed: 30 kD |
| Form/Buffer | Liquid in 0.42% Potassium phosphate, 0.87% Sodium chloride, pH 7.3, 30% glycerol, and 0.01% sodium azide. |
| Alternative Names | TPI; Triosephosphate isomerase; TIM; Triose-phosphate isomerase |
| Gene Symbol | TPI1 |
| Entrez Gene | 7167(Human); 21991(Mouse) |
| SwissProt | P60174(Human); P17751(Mouse) |

*AREX continuously optimizes our products. Webpage content may not reflect the latest updates. For inquiries, please contact info@arexbio.com or your local distributor.

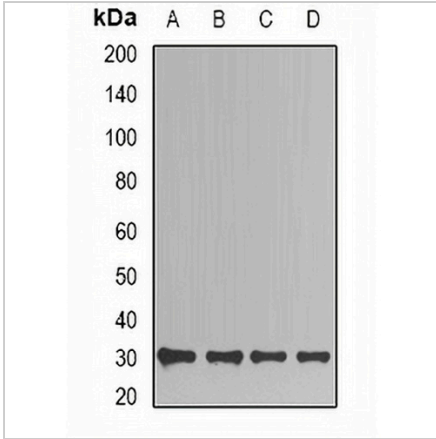
*Clone Number, Reactivity, Source/Host and Clonality can be found in the product name and Key Features section above.

DATASHEET

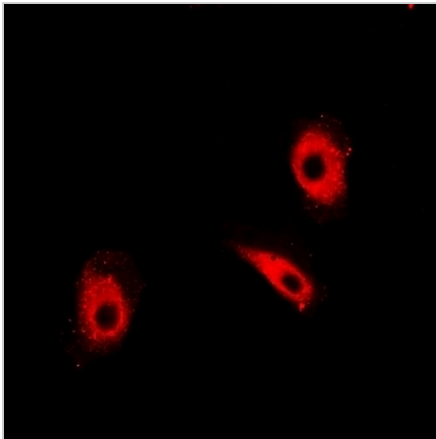
TIM Rabbit Polyclonal Antibody

CAT. NO. APA12682

DATA



Western blot analysis of TIM expression in Jurkat (A), HepG2 (B), mouse kidney (C), mouse brain (D) whole cell lysates. (Predicted band size: 17; 26; 30 kD; Observed band size: 30 kD)



Immunofluorescent analysis of TIM staining in HeLa cells. Formalin-fixed cells were permeabilized with 0.1% Triton X-100 in TBS for 5-10 minutes and blocked with 3% BSA-PBS for 30 minutes at room temperature. Cells were probed with the primary antibody in 3% BSA-PBS and incubated overnight at 4 °C in a humidified chamber. Cells were washed with PBST and incubated with a DyLight 594-conjugated secondary antibody (red) in PBS at room temperature in the dark.

STORAGE

Store at 4°C short term. For long term storage, store at -20°C, avoiding freeze/thaw cycles.

NOTE

For Research Use Only. Not for diagnostic, therapeutics, prophylactic or in vivo use.