

DATASHEET

ARF1 Rabbit Polyclonal Antibody

CAT. NO. APA12685

KEY FEATURES

Target	ARF1	Source / Host	Rabbit
Reactivity	Human, Mouse, Rat	Clonality	Polyclonal
Applications	WB	Conjugation	Unconjugated
Form / Buffer	Liquid in 0.42% Potassium phosphate, 0.87% Sodium chloride, pH 7.3, 30% glycerol, and 0.01% sodium azide.		Storage at -20°C

BACKGROUND

Small GTPase involved in protein trafficking between different compartments . Modulates vesicle budding and uncoating within the Golgi complex . In its GTP-bound form, triggers the recruitment of coatmer proteins to the Golgi membrane . The hydrolysis of ARF1-bound GTP, which is mediated by ARFGAPs proteins, is required for dissociation of coat proteins from Golgi membranes and vesicles . The GTP-bound form interacts with PICK1 to limit PICK1-mediated inhibition of Arp2/3 complex activity; the function is linked to AMPA receptor (AMPA) trafficking, regulation of synaptic plasticity of excitatory synapses and spine shrinkage during long-term depression (LTD) .

APPLICATION

To ensure optimal assay performance, AREX recommends conducting reagent titration tailored to each testing system for optimal detection results.

WB	1:500 - 1:2000
----	----------------

*Results are sample-specific. Please refer to your local assay conditions and test parameters for reference.

PRODUCT OVERVIEW

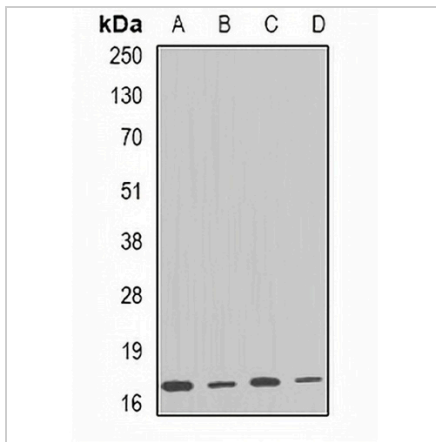
Description	Rabbit polyclonal antibody to ARF1
Specificity	Recognizes endogenous levels of ARF1 protein.
Antibody Type	Primary antibody
Immunogen	KLH-conjugated synthetic peptide of human ARF1
Purification	The antibody was purified by immunogen affinity chromatography.
Molecular Weight	Predicted: 20 kD; Observed: 17 kD
Form/Buffer	Liquid in 0.42% Potassium phosphate, 0.87% Sodium chloride, pH 7.3, 30% glycerol, and 0.01% sodium azide.
Alternative Names	ADP-ribosylation factor 1
Gene Symbol	ARF1
Entrez Gene	375(Human); 11840(Mouse); 64310(Rat)
SwissProt	P84077(Human); P84078(Mouse); P84079(Rat)

*AREX continuously optimizes our products. Webpage content may not reflect the latest updates. For inquiries, please contact info@arexbio.com or your local distributor.

*Clone Number, Reactivity, Source/Host and Clonality can be found in the product name and Key Features section above.

DATASHEET**ARF1 Rabbit Polyclonal Antibody**

CAT. NO. APA12685

DATA

Western blot analysis of ARF1 expression in HT29 (A), SKOV3 (B), mouse brain (C), rat liver (D) whole cell lysates. (Predicted band size: 20 kD; Observed band size: 17 kD)

STORAGE

Store at 4°C short term. For long term storage, store at -20°C, avoiding freeze/thaw cycles.

NOTE

For Research Use Only. Not for diagnostic, therapeutics, prophylactic or in vivo use.