

DATASHEET

DISC-1 Rabbit Polyclonal Antibody

CAT. NO. APA12688

KEY FEATURES

Target	DISC-1	Source / Host	Rabbit
Reactivity	Human, Mouse, Rat	Clonality	Polyclonal
Applications	WB	Conjugation	Unconjugated
Form / Buffer	Liquid in 0.42% Potassium phosphate, 0.87% Sodium chloride, pH 7.3, 30% glycerol, and 0.01% sodium azide.		Storage at-20°C

BACKGROUND

Involved in the regulation of multiple aspects of embryonic and adult neurogenesis . Required for neural progenitor proliferation in the ventricular/subventricular zone during embryonic brain development and in the adult dentate gyrus of the hippocampus . Participates in the Wnt-mediated neural progenitor proliferation as a positive regulator by modulating GSK3B activity and CTNNB1 abundance . Plays a role as a modulator of the AKT-mTOR signaling pathway controlling the tempo of the process of newborn neurons integration during adult neurogenesis, including neuron positioning, dendritic development and synapse formation . Inhibits the activation of AKT-mTOR signaling upon interaction with CCDC88A .

APPLICATION

To ensure optimal assay performance, AREX recommends conducting reagent titration tailored to each testing system for optimal detection results.

WB	1:500 - 1:1000
----	----------------

*Results are sample-specific. Please refer to your local assay conditions and test parameters for reference.

PRODUCT OVERVIEW

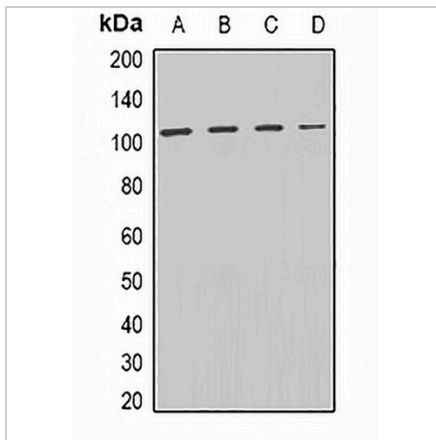
Description	Rabbit polyclonal antibody to DISC-1
Specificity	Recognizes endogenous levels of DISC-1 protein.
Antibody Type	Primary antibody
Immunogen	KLH-conjugated synthetic peptide of human DISC-1
Purification	The antibody was purified by immunogen affinity chromatography.
Molecular Weight	Predicted: 22; Observed: 105 kD
Form/Buffer	Liquid in 0.42% Potassium phosphate, 0.87% Sodium chloride, pH 7.3, 30% glycerol, and 0.01% sodium azide.
Alternative Names	KIAA0457; Disrupted in schizophrenia 1 protein
Gene Symbol	DISC1
Entrez Gene	27185(Human); 244667(Mouse); 307940(Rat)
SwissProt	Q9NRI5(Human); Q811T9(Mouse); Q810H6(Rat)

*AREX continuously optimizes our products. Webpage content may not reflect the latest updates. For inquiries, please contact info@arexbio.com or your local distributor.

*Clone Number, Reactivity, Source/Host and Clonality can be found in the product name and Key Features section above.

DATASHEET**DISC-1 Rabbit Polyclonal Antibody**

CAT. NO. APA12688

DATA

Western blot analysis of DISC-1 expression in HL60 (A), SW620 (B), mouse heart (C), rat brain (D) whole cell lysates. (Predicted band size: 22; 37-38; 6-93 kD; Observed band size: 105 kD)

STORAGE

Store at 4°C short term. For long term storage, store at -20°C, avoiding freeze/thaw cycles.

NOTE

For Research Use Only. Not for diagnostic, therapeutics, prophylactic or in vivo use.