

DATASHEET

Connexin 31 Rabbit Polyclonal Antibody

CAT. NO. APA12689

KEY FEATURES

Target	Connexin 31	Source / Host	Rabbit
Reactivity	Human, Mouse, Rat	Clonality	Polyclonal
Applications	WB	Conjugation	Unconjugated
Form / Buffer	Liquid in 0.42% Potassium phosphate, 0.87% Sodium chloride, pH 7.3, 30% glycerol, and 0.01% sodium azide.	Storage	at-20°C

BACKGROUND

One gap junction consists of a cluster of closely packed pairs of transmembrane channels, the connexons, through which materials of low MW diffuse from one cell to a neighboring cell.

APPLICATION

To ensure optimal assay performance, AREX recommends conducting reagent titration tailored to each testing system for optimal detection results.

WB	1:500 - 1:2000
----	----------------

*Results are sample-specific. Please refer to your local assay conditions and test parameters for reference.

PRODUCT OVERVIEW

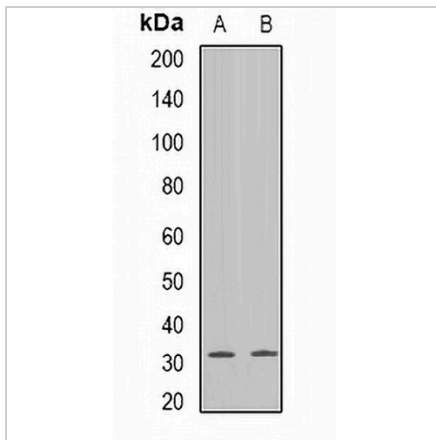
Description	Rabbit polyclonal antibody to Connexin 31
Specificity	Recognizes endogenous levels of Connexin 31 protein.
Antibody Type	Primary antibody
Immunogen	Recombinant fusion protein of human Connexin 31
Purification	The antibody was purified by immunogen affinity chromatography.
Molecular Weight	Predicted: 30 kD; Observed: 31 kD
Form/Buffer	Liquid in 0.42% Potassium phosphate, 0.87% Sodium chloride, pH 7.3, 30% glycerol, and 0.01% sodium azide.
Alternative Names	CX31; Gap junction beta-3 protein; Connexin-31; Cx31
Gene Symbol	GJB3
Entrez Gene	2707(Human); 14620(Mouse)
SwissProt	O75712(Human); P28231(Mouse)

*AREX continuously optimizes our products. Webpage content may not reflect the latest updates. For inquiries, please contact info@arexbio.com or your local distributor.

*Clone Number, Reactivity, Source/Host and Clonality can be found in the product name and Key Features section above.

DATASHEET**Connexin 31 Rabbit Polyclonal Antibody**

CAT. NO. APA12689

DATA

Western blot analysis of Connexin 31 expression in mouse testis (A), mouse intestines (B) whole cell lysates. (Predicted band size: 30 kD; Observed band size: 31 kD)

STORAGE

Store at 4°C short term. For long term storage, store at -20°C, avoiding freeze/thaw cycles.

NOTE

For Research Use Only. Not for diagnostic, therapeutics, prophylactic or in vivo use.