

**DATASHEET**

**Kv11.1 Rabbit Polyclonal Antibody**

CAT. NO. APA12690

**KEY FEATURES**

Target	Kv11.1	Source / Host	Rabbit
Reactivity	Human, Mouse	Clonality	Polyclonal
Applications	WB, IHC	Conjugation	Unconjugated
Form / Buffer	Liquid in 0.42% Potassium phosphate, 0.87% Sodium chloride, pH 7.3, 30% glycerol, and 0.01% sodium azide.		Storage at -20°C

**BACKGROUND**

Pore-forming (alpha) subunit of voltage-gated inwardly rectifying potassium channel subunit of voltage-gated inwardly rectifying potassium channel . Channel properties are modulated by cAMP and subunit assembly . Characterized by unusual gating kinetics by producing relatively small outward currents during membrane depolarization and large inward currents during subsequent repolarization which reflect a rapid inactivation during depolarization and quick recovery from inactivation but slow deactivation (closing) during repolarization . Forms a stable complex with KCNE1 or KCNE2, and that this heteromultimerization regulates inward rectifier potassium channel activity .

**APPLICATION**

To ensure optimal assay performance, AREX recommends conducting reagent titration tailored to each testing system for optimal detection results.

WB	1:500 - 1:2000
IHC	1:50 - 1:200

\*Results are sample-specific. Please refer to your local assay conditions and test parameters for reference.

**PRODUCT OVERVIEW**

Description	Rabbit polyclonal antibody to Kv11.1
Specificity	Recognizes endogenous levels of Kv11.1 protein.
Antibody Type	Primary antibody
Immunogen	KLH-conjugated synthetic peptide of human Kv11.1
Purification	The antibody was purified by immunogen affinity chromatography.
Molecular Weight	Predicted: 60; Observed: 148 kD
Form/Buffer	Liquid in 0.42% Potassium phosphate, 0.87% Sodium chloride, pH 7.3, 30% glycerol, and 0.01% sodium azide.
Alternative Names	ERG; ERG1; HERG; Potassium voltage-gated channel subfamily H member 2; Eag homolog; Ether-a-go-go-related gene potassium channel 1; ERG-1; Eag-related protein 1; Ether-a-go-go-related protein 1; H-ERG; hERG-1; hERG1; Voltage-gated potassium channel subunit Kv11.1
Gene Symbol	KCNH2
Entrez Gene	3757(Human); 16511(Mouse)
SwissProt	Q12809(Human); O35219(Mouse)

\*AREX continuously optimizes our products. Webpage content may not reflect the latest updates. For inquiries, please contact [info@arexbio.com](mailto:info@arexbio.com) or your local distributor.

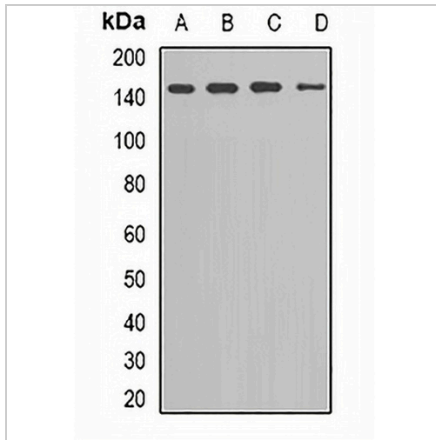
\*Clone Number, Reactivity, Source/Host and Clonality can be found in the product name and Key Features section above.

**DATASHEET**

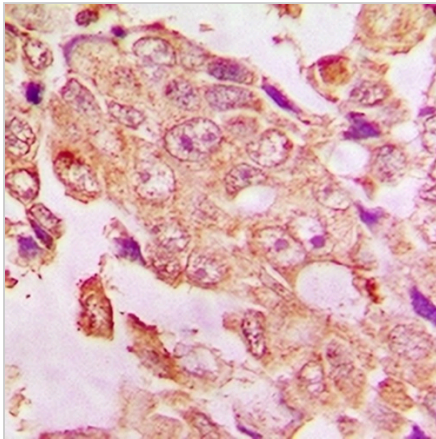
**Kv11.1 Rabbit Polyclonal Antibody**

CAT. NO. APA12690

**DATA**



Western blot analysis of Kv11.1 expression in SW620 (A), MCF7 (B), K562 (C), mouse brain (D) whole cell lysates. (Predicted band size: 60; 90; 97; 115; 121; 126 kD; Observed band size: 148 kD)



Immunohistochemical analysis of Kv11.1 staining in human breast cancer formalin fixed paraffin embedded tissue section. The section was pre-treated using heat mediated antigen retrieval with sodium citrate buffer (pH 6.0). The section was then incubated with the antibody at room temperature and detected using an HRP conjugated compact polymer system. DAB was used as the chromogen. The section was then counterstained with haematoxylin and mounted with DPX.

**STORAGE**

Store at 4°C short term. For long term storage, store at -20°C, avoiding freeze/thaw cycles.

**NOTE**

For Research Use Only. Not for diagnostic, therapeutics, prophylactic or in vivo use.