

DATASHEET

MCM-BP Rabbit Polyclonal Antibody

CAT. NO. APA12691

KEY FEATURES

Target	MCM-BP	Source / Host	Rabbit
Reactivity	Human, Mouse, Rat	Clonality	Polyclonal
Applications	WB	Conjugation	Unconjugated
Form / Buffer	Liquid in 0.42% Potassium phosphate, 0.87% Sodium chloride, pH 7.3, 30% glycerol, and 0.01% sodium azide.		Storage at -20°C

BACKGROUND

Associated component of the MCM complex that acts as a regulator of DNA replication. Binds to the MCM complex during late S phase and promotes the disassembly of the MCM complex from chromatin, thereby acting as a key regulator of pre-replication complex (pre-RC) unloading from replicated DNA. Can dissociate the MCM complex without addition of ATP; probably acts by destabilizing interactions of each individual subunits of the MCM complex. Required for sister chromatid cohesion.

APPLICATION

To ensure optimal assay performance, AREX recommends conducting reagent titration tailored to each testing system for optimal detection results.

WB	1:500 - 1:2000
----	----------------

*Results are sample-specific. Please refer to your local assay conditions and test parameters for reference.

PRODUCT OVERVIEW

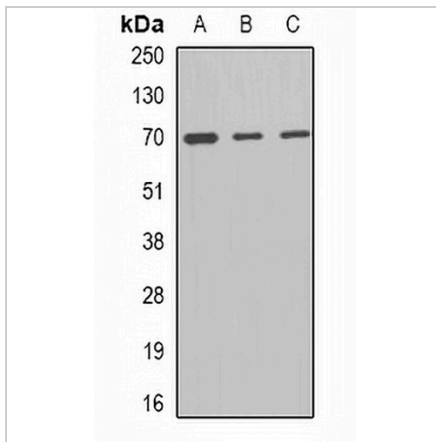
Description	Rabbit polyclonal antibody to MCM-BP
Specificity	Recognizes endogenous levels of MCM-BP protein.
Antibody Type	Primary antibody
Immunogen	KLH-conjugated synthetic peptide of human MCM-BP
Purification	The antibody was purified by immunogen affinity chromatography.
Molecular Weight	Predicted: 52; Observed: 73 kD
Form/Buffer	Liquid in 0.42% Potassium phosphate, 0.87% Sodium chloride, pH 7.3, 30% glycerol, and 0.01% sodium azide.
Alternative Names	C10orf119; Mini-chromosome maintenance complex-binding protein; MCM-BP; MCM-binding protein
Gene Symbol	MCMBP
Entrez Gene	79892(Human); 210711(Mouse); 309009(Rat)
SwissProt	Q9BTE3(Human); Q8R3C0(Mouse); B1H268(Rat)

*AREX continuously optimizes our products. Webpage content may not reflect the latest updates. For inquiries, please contact info@arexbio.com or your local distributor.

*Clone Number, Reactivity, Source/Host and Clonality can be found in the product name and Key Features section above.

DATASHEET**MCM-BP Rabbit Polyclonal Antibody**

CAT. NO. APA12691

DATA

Western blot analysis of MCM-BP expression in A431 (A), mouse spleen (B), mouse liver (C) whole cell lysates. (Predicted band size: 52; 72 kD; Observed band size: 73 kD)

STORAGE

Store at 4°C short term. For long term storage, store at -20°C, avoiding freeze/thaw cycles.

NOTE

For Research Use Only. Not for diagnostic, therapeutics, prophylactic or in vivo use.