

DATASHEET

PAR6A Rabbit Polyclonal Antibody

CAT. NO. APA12692

KEY FEATURES

Target	PAR6A	Source / Host	Rabbit
Reactivity	Human, Mouse, Rat	Clonality	Polyclonal
Applications	WB, IHC	Conjugation	Unconjugated
Form / Buffer	Liquid in 0.42% Potassium phosphate, 0.87% Sodium chloride, pH 7.3, 30% glycerol, and 0.01% sodium azide.		Storage at -20°C

BACKGROUND

Adapter protein involved in asymmetrical cell division and cell polarization processes. Probably involved in the formation of epithelial tight junctions. Association with PARD3 may prevent the interaction of PARD3 with F11R/JAM1, thereby preventing tight junction assembly. The PARD6-PARD3 complex links GTP-bound Rho small GTPases to atypical protein kinase C proteins. Regulates centrosome organization and function. Essential for the centrosomal recruitment of key proteins that control centrosomal microtubule organization.

APPLICATION

To ensure optimal assay performance, AREX recommends conducting reagent titration tailored to each testing system for optimal detection results.

WB	1:500 - 1:2000
IHC	1:50 - 1:100

*Results are sample-specific. Please refer to your local assay conditions and test parameters for reference.

PRODUCT OVERVIEW

Description	Rabbit polyclonal antibody to PAR6A
Specificity	Recognizes endogenous levels of PAR6A protein.
Antibody Type	Primary antibody
Immunogen	KLH-conjugated synthetic peptide of human PAR6A
Purification	The antibody was purified by immunogen affinity chromatography.
Molecular Weight	Predicted: 37 kD; Observed: 37 kD
Form/Buffer	Liquid in 0.42% Potassium phosphate, 0.87% Sodium chloride, pH 7.3, 30% glycerol, and 0.01% sodium azide.
Alternative Names	PAR6A; Partitioning defective 6 homolog alpha; PAR-6; PAR-6 alpha; PAR-6A; PAR6C; Tax interaction protein 40; TIP-40
Gene Symbol	PARD6A
Entrez Gene	50855(Human); 56513(Mouse); 307799(Rat)
SwissProt	Q9NPB6(Human); Q9Z101(Mouse); Q6B4M5(Rat)

*AREX continuously optimizes our products. Webpage content may not reflect the latest updates. For inquiries, please contact info@arexbio.com or your local distributor.

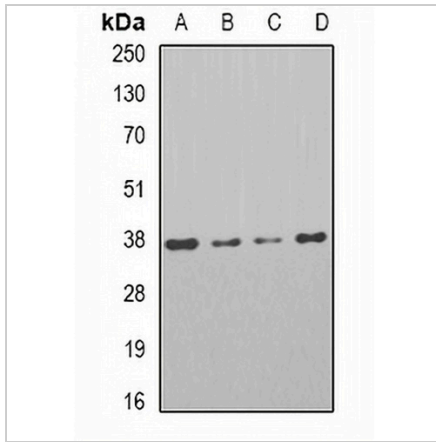
*Clone Number, Reactivity, Source/Host and Clonality can be found in the product name and Key Features section above.

DATASHEET

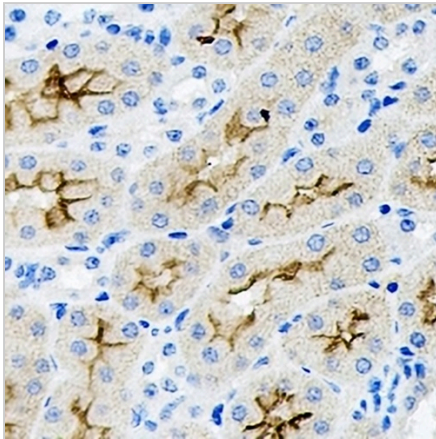
PAR6A Rabbit Polyclonal Antibody

CAT. NO. APA12692

DATA



Western blot analysis of PAR6A expression in HT29 (A), Jrukat (B), Raji (C), mouse testis (D) whole cell lysates. (Predicted band size: 37 kD; Observed band size: 37 kD)



Immunohistochemical analysis of PAR6A staining in rat kidney formalin fixed paraffin embedded tissue section. The section was pre-treated using heat mediated antigen retrieval with sodium citrate buffer (pH 6.0). The section was then incubated with the antibody at room temperature and detected using an HRP conjugated compact polymer system. DAB was used as the chromogen. The section was then counterstained with haematoxylin and mounted with DPX.

STORAGE

Store at 4°C short term. For long term storage, store at -20°C, avoiding freeze/thaw cycles.

NOTE

For Research Use Only. Not for diagnostic, therapeutics, prophylactic or in vivo use.