

DATASHEET

AFAP1 Rabbit Polyclonal Antibody

CAT. NO. APA12699

KEY FEATURES

Target	AFAP1	Source / Host	Rabbit
Reactivity	Human, Mouse, Rat	Clonality	Polyclonal
Applications	WB, IF/ICC	Conjugation	Unconjugated
Form / Buffer	Liquid in 0.42% Potassium phosphate, 0.87% Sodium chloride, pH 7.3, 30% glycerol, and 0.01% sodium azide.		Storage at-20°C

BACKGROUND

Can cross-link actin filaments into both network and bundle structures . May modulate changes in actin filament integrity and induce lamellipodia formation. May function as an adapter molecule that links other proteins, such as SRC and PKC to the actin cytoskeleton. Seems to play a role in the development and progression of prostate adenocarcinoma by regulating cell-matrix adhesions and migration in the cancer cells.

APPLICATION

To ensure optimal assay performance, AREX recommends conducting reagent titration tailored to each testing system for optimal detection results.

WB	1:500 - 1:2000
IF/ICC	1:50 - 1:200

*Results are sample-specific. Please refer to your local assay conditions and test parameters for reference.

PRODUCT OVERVIEW

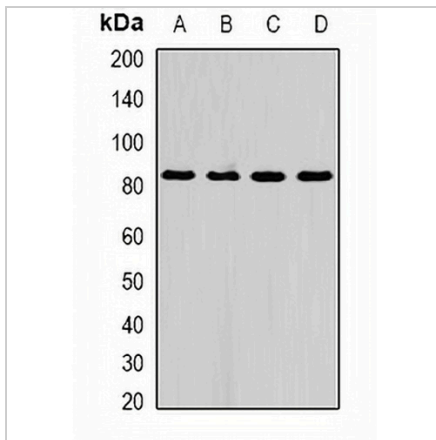
Description	Rabbit polyclonal antibody to AFAP1
Specificity	Recognizes endogenous levels of AFAP1 protein.
Antibody Type	Primary antibody
Immunogen	Recombinant fusion protein of human AFAP1
Purification	The antibody was purified by immunogen affinity chromatography.
Molecular Weight	Predicted: 80; Observed: 81 kD
Form/Buffer	Liquid in 0.42% Potassium phosphate, 0.87% Sodium chloride, pH 7.3, 30% glycerol, and 0.01% sodium azide.
Alternative Names	AFAP; Actin filament-associated protein 1; 110 kDa actin filament-associated protein; AFAP-110
Gene Symbol	AFAP1
Entrez Gene	60312(Human); 70292(Mouse); 140935(Rat)
SwissProt	Q8N556(Human); Q80YS6(Mouse); Q8VH46(Rat)

*AREX continuously optimizes our products. Webpage content may not reflect the latest updates. For inquiries, please contact info@arexbio.com or your local distributor.

*Clone Number, Reactivity, Source/Host and Clonality can be found in the product name and Key Features section above.

DATASHEET**AFAP1 Rabbit Polyclonal Antibody**

CAT. NO. APA12699

DATA

Western blot analysis of AFAP1 expression in A549 (A), HepG2 (B), mouse liver (C), rat liver (D) whole cell lysates. (Predicted band size: 80; 89 kD; Observed band size: 81 kD)

STORAGE

Store at 4°C short term. For long term storage, store at -20°C, avoiding freeze/thaw cycles.

NOTE

For Research Use Only. Not for diagnostic, therapeutics, prophylactic or in vivo use.