

DATASHEET

SPE39 Rabbit Polyclonal Antibody

CAT. NO. APA12700

KEY FEATURES

Target	SPE39	Source / Host	Rabbit
Reactivity	Human, Mouse, Rat	Clonality	Polyclonal
Applications	WB	Conjugation	Unconjugated
Form / Buffer	Liquid in 0.42% Potassium phosphate, 0.87% Sodium chloride, pH 7.3, 30% glycerol, and 0.01% sodium azide.		Storage at -20°C

BACKGROUND

Proposed to be involved in endosomal maturation implicating in part VPS33B. In epithelial cells, the VPS33B:VIPAS39 complex may play a role in the apical RAB11A-dependent recycling pathway and in the maintenance of the apical-basolateral polarity. May play a role in lysosomal trafficking, probably via association with the core HOPS complex in a discrete population of endosomes; the functions seems to be independent of VPS33B. May play a role in vesicular trafficking during spermatogenesis. May be involved in direct or indirect transcriptional regulation of E-cadherin.

APPLICATION

To ensure optimal assay performance, AREX recommends conducting reagent titration tailored to each testing system for optimal detection results.

WB	1:500 - 1:2000
----	----------------

*Results are sample-specific. Please refer to your local assay conditions and test parameters for reference.

PRODUCT OVERVIEW

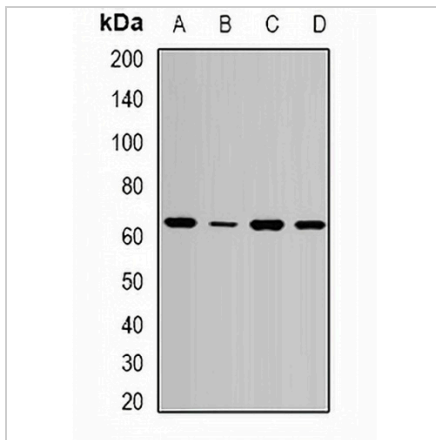
Description	Rabbit polyclonal antibody to SPE39
Specificity	Recognizes endogenous levels of SPE39 protein.
Antibody Type	Primary antibody
Immunogen	Recombinant fusion protein of human SPE39
Purification	The antibody was purified by immunogen affinity chromatography.
Molecular Weight	Predicted: 51; Observed: 60 kD
Form/Buffer	Liquid in 0.42% Potassium phosphate, 0.87% Sodium chloride, pH 7.3, 30% glycerol, and 0.01% sodium azide.
Alternative Names	C14orf133; SPE39; VIPAR; Spermatogenesis-defective protein 39 homolog; hSPE-39; VPS33B-interacting protein in apical-basolateral polarity regulator; VPS33B-interacting protein in polarity and apical restriction
Gene Symbol	VIPAS39
Entrez Gene	63894(Human); 104799(Mouse); 681989(Rat)
SwissProt	Q9H9C1(Human); Q8BGQ1(Mouse); Q5PQN6(Rat)

*AREX continuously optimizes our products. Webpage content may not reflect the latest updates. For inquiries, please contact info@arexbio.com or your local distributor.

*Clone Number, Reactivity, Source/Host and Clonality can be found in the product name and Key Features section above.

DATASHEET**SPE39 Rabbit Polyclonal Antibody**

CAT. NO. APA12700

DATA

Western blot analysis of SPE39 expression in MCF7 (A), HepG2 (B), mouse liver (C), mouse kidney (D) whole cell lysates. (Predicted band size: 51; 57 kD; Observed band size: 60 kD)

STORAGE

Store at 4°C short term. For long term storage, store at -20°C, avoiding freeze/thaw cycles.

NOTE

For Research Use Only. Not for diagnostic, therapeutics, prophylactic or in vivo use.