

DATASHEET

Centrin-1 Rabbit Polyclonal Antibody

CAT. NO. APA12701

KEY FEATURES

Target	Centrin-1	Source / Host	Rabbit
Reactivity	Human, Mouse, Rat	Clonality	Polyclonal
Applications	WB	Conjugation	Unconjugated
Form / Buffer	Liquid in 0.42% Potassium phosphate, 0.87% Sodium chloride, pH 7.3, 30% glycerol, and 0.01% sodium azide.		Storage at -20°C

BACKGROUND

Plays a fundamental role in microtubule-organizing center structure and function . Plays a role in sperm cilia formation .

APPLICATION

To ensure optimal assay performance, AREX recommends conducting reagent titration tailored to each testing system for optimal detection results.

WB	1:500 - 1:1000
----	----------------

*Results are sample-specific. Please refer to your local assay conditions and test parameters for reference.

PRODUCT OVERVIEW

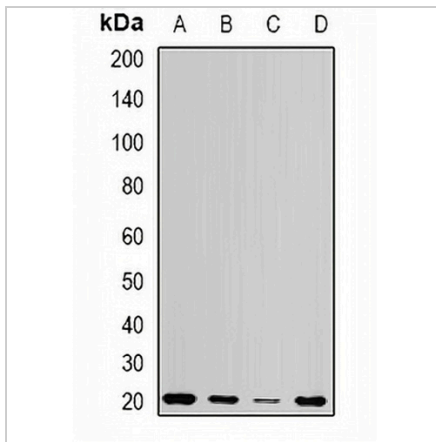
Description	Rabbit polyclonal antibody to Centrin-1
Specificity	Recognizes endogenous levels of Centrin-1 protein.
Antibody Type	Primary antibody
Immunogen	Recombinant fusion protein of human Centrin-1
Purification	The antibody was purified by immunogen affinity chromatography.
Molecular Weight	Predicted: 19 kD; Observed: 20 kD
Form/Buffer	Liquid in 0.42% Potassium phosphate, 0.87% Sodium chloride, pH 7.3, 30% glycerol, and 0.01% sodium azide.
Alternative Names	CEN1; CETN; Centrin-1; Caltractin isoform 2
Gene Symbol	CETN1
Entrez Gene	1068(Human); 26369(Mouse)
SwissProt	Q12798(Human); P41209(Mouse)

*AREX continuously optimizes our products. Webpage content may not reflect the latest updates. For inquiries, please contact info@arexbio.com or your local distributor.

*Clone Number, Reactivity, Source/Host and Clonality can be found in the product name and Key Features section above.

DATASHEET**Centrin-1 Rabbit Polyclonal Antibody**

CAT. NO. APA12701

DATA

Western blot analysis of Centrin-1 expression in Jurkat (A), HeLa (B), mouse testis (C), rat testis (D) whole cell lysates. (Predicted band size: 19 kD; Observed band size: 20 kD)

STORAGE

Store at 4°C short term. For long term storage, store at -20°C, avoiding freeze/thaw cycles.

NOTE

For Research Use Only. Not for diagnostic, therapeutics, prophylactic or in vivo use.