

DATASHEET

STAU1 Rabbit Polyclonal Antibody

CAT. NO. APA12703

KEY FEATURES

Target	STAU1	Source / Host	Rabbit
Reactivity	Human, Mouse, Rat	Clonality	Polyclonal
Applications	WB, IHC	Conjugation	Unconjugated
Form / Buffer	Liquid in 0.42% Potassium phosphate, 0.87% Sodium chloride, pH 7.3, 30% glycerol, and 0.01% sodium azide.		Storage at -20°C

BACKGROUND

Binds double-stranded RNA (regardless of the sequence) and tubulin. May play a role in specific positioning of mRNAs at given sites in the cell by cross-linking cytoskeletal and RNA components, and in stimulating their translation at the site.; (Microbial infection) Plays a role in virus particles production of many viruses including of HIV-1, HERV-K, ebola virus and influenza virus. Acts by interacting with various viral proteins involved in particle budding process.

APPLICATION

To ensure optimal assay performance, AREX recommends conducting reagent titration tailored to each testing system for optimal detection results.

WB	1:500 - 1:2000
IHC	1:50 - 1:100

*Results are sample-specific. Please refer to your local assay conditions and test parameters for reference.

PRODUCT OVERVIEW

Description	Rabbit polyclonal antibody to STAU1
Specificity	Recognizes endogenous levels of STAU1 protein.
Antibody Type	Primary antibody
Immunogen	Recombinant fusion protein of human STAU1
Purification	The antibody was purified by immunogen affinity chromatography.
Molecular Weight	Predicted: 54; Observed: 63 kD
Form/Buffer	Liquid in 0.42% Potassium phosphate, 0.87% Sodium chloride, pH 7.3, 30% glycerol, and 0.01% sodium azide.
Alternative Names	STAU; Double-stranded RNA-binding protein Staufen homolog 1
Gene Symbol	STAU1
Entrez Gene	6780(Human); 20853(Mouse)
SwissProt	O95793(Human); Q9Z108(Mouse)

*AREX continuously optimizes our products. Webpage content may not reflect the latest updates. For inquiries, please contact info@arexbio.com or your local distributor.

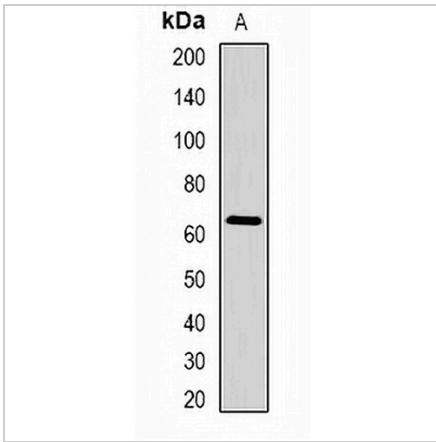
*Clone Number, Reactivity, Source/Host and Clonality can be found in the product name and Key Features section above.

DATASHEET

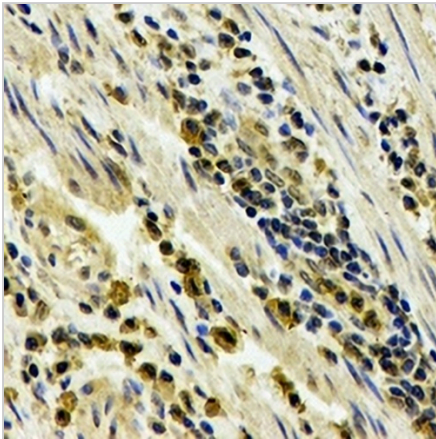
STAU1 Rabbit Polyclonal Antibody

CAT. NO. APA12703

DATA



Western blot analysis of STAU1 expression in HepG2 (A) whole cell lysates. (Predicted band size: 54; 55; 63 kD; Observed band size: 63 kD)



Immunohistochemical analysis of STAU1 staining in human esophageal cancer formalin fixed paraffin embedded tissue section. The section was pre-treated using heat mediated antigen retrieval with sodium citrate buffer (pH 6.0). The section was then incubated with the antibody at room temperature and detected using an HRP conjugated compact polymer system. DAB was used as the chromogen. The section was then counterstained with haematoxylin and mounted with DPX.

STORAGE

Store at 4°C short term. For long term storage, store at -20°C, avoiding freeze/thaw cycles.

NOTE

For Research Use Only. Not for diagnostic, therapeutics, prophylactic or in vivo use.