

DATASHEET

DCXR Rabbit Polyclonal Antibody

CAT. NO. APA12707

KEY FEATURES

Target	DCXR	Source / Host	Rabbit
Reactivity	Human, Mouse, Rat	Clonality	Polyclonal
Applications	WB	Conjugation	Unconjugated
Form / Buffer	Liquid in 0.42% Potassium phosphate, 0.87% Sodium chloride, pH 7.3, 30% glycerol, and 0.01% sodium azide.		Storage at -20°C

BACKGROUND

Catalyzes the NADPH-dependent reduction of several pentoses, tetroses, trioses, alpha-dicarbonyl compounds and L-xylulose . Can use both NAD and NADP as cosubstrate but shows higher activity with NADP . Participates in the uronate cycle of glucose metabolism . May play a role in the water absorption and cellular osmoregulation in the proximal renal tubules by producing xylitol, an osmolyte, thereby preventing osmolytic stress from occurring in the renal tubules .

APPLICATION

To ensure optimal assay performance, AREX recommends conducting reagent titration tailored to each testing system for optimal detection results.

WB	1:500 - 1:2000
----	----------------

*Results are sample-specific. Please refer to your local assay conditions and test parameters for reference.

PRODUCT OVERVIEW

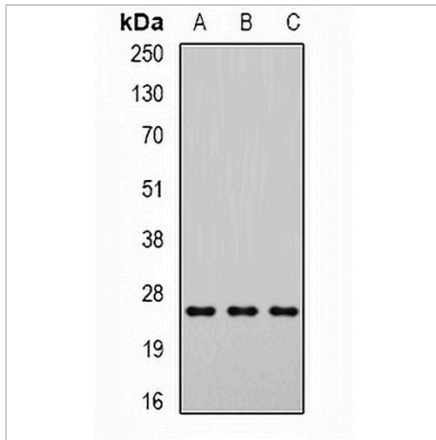
Description	Rabbit polyclonal antibody to DCXR
Specificity	Recognizes endogenous levels of DCXR protein.
Antibody Type	Primary antibody
Immunogen	Recombinant fusion protein of human DCXR
Purification	The antibody was purified by immunogen affinity chromatography.
Molecular Weight	Predicted: 25 kD; Observed: 25 kD
Form/Buffer	Liquid in 0.42% Potassium phosphate, 0.87% Sodium chloride, pH 7.3, 30% glycerol, and 0.01% sodium azide.
Alternative Names	L-xylulose reductase; XR; Carbonyl reductase II; Dicarbonyl/L-xylulose reductase; Kidney dicarbonyl reductase; kiDCR; Sperm surface protein P34H
Gene Symbol	DCXR
Entrez Gene	51181(Human); 67880(Mouse); 171408(Rat)
SwissProt	Q7Z4W1(Human); Q91X52(Mouse); Q920P0(Rat)

*AREX continuously optimizes our products. Webpage content may not reflect the latest updates. For inquiries, please contact info@arexbio.com or your local distributor.

*Clone Number, Reactivity, Source/Host and Clonality can be found in the product name and Key Features section above.

DATASHEET**DCXR Rabbit Polyclonal Antibody**

CAT. NO. APA12707

DATA

Western blot analysis of DCXR expression in MCF7 (A), mouse liver (B), rat liver (C) whole cell lysates. (Predicted band size: 25 kD; Observed band size: 25 kD)

STORAGE

Store at 4°C short term. For long term storage, store at -20°C, avoiding freeze/thaw cycles.

NOTE

For Research Use Only. Not for diagnostic, therapeutics, prophylactic or in vivo use.